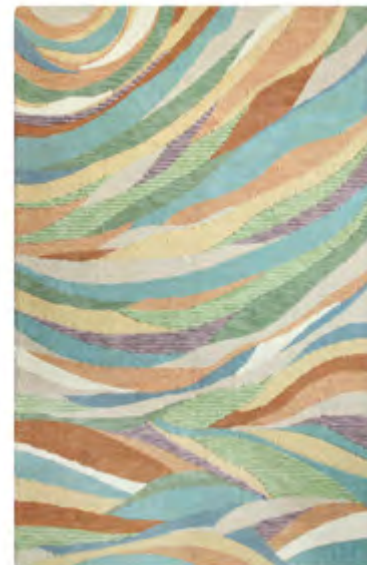




# Spring 2019 Look Book

## Spring Rugs



### Desert Wind

A layered landscape of flowing curves and contrasting textures, Desert Wind is inspired by the soft shades and natural light of canyons and coastlines. Sweeping bands of color offer a visual vista of texture and pattern that will highlight homes from seaside to mountain top. A versatile original of 100% wool yarns in hand-tufted, cut-and-loop pile.

100% wool. Hand-tufted, cut & loop pile.  
Color: Multi

2'6 x 8'	\$545
3' x 5'	\$395
5' x 8'	\$995
8' x 10'	\$1995
9' x 13'	\$2995





## Spring Rugs



### Griffin

Abstract geometry lends the study of shape and space to our gracious design. Textural diamonds and triangles are rendered in multiple natural shades, complemented by mottled denim blue and sunny saffron yellow. Hand-tufted of 100% wool yarns in cut-and-loop pile.

100% wool. Hand-tufted, cut & loop pile.  
Color: Blue

2'6 x 8'	\$545
3' x 5'	\$395
5' x 8'	\$995
8' x 10'	\$1995
9' x 13'	\$2995





## Spring Rugs



### Positano

The extraordinary color and light of the Italian coast inspired the Old World charm of Positano. Artistically combining the hues of water, sun, sky, and foliage into a vintage Italianate motif, this lush rug has been uniquely designed to purvey the beloved appearance of a beautifully aged antique. The cut-and-loop pile is crafted of 100% wool and tightly hand-tufted, offering a beautiful twist on a traditional style.

100% wool. Hand-tufted, cut & loop pile.  
Color: Blue

2'6" x 8'	\$545
3' x 5'	\$395
5' x 8'	\$995
8' x 10'	\$1995
9' x 13'	\$2995





## Spring Rugs



### Sundara

Like a treasured tapestry, beautiful Sundara melds historic mystery with a modern day sensibility. Bold pops of color emerge from the blush-gray background shades into a complex pattern, expertly designed to display the appearance of a beloved and well-used heirloom, finished with subtle border patterning. Hand-tufted of 100% wool yarns in a lush cut-and-loop pile.

100% wool. Hand-tufted, cut & loop pile.  
Color: Multi

2'6" x 8'	\$545
3' x 5'	\$395
5' x 8'	\$995
8' x 10'	\$1995
9' x 13'	\$2995





## Spring Rugs



### Breezy

Cool summer zephyrs wafting through sun-dappled foliage inspired this lush leafy pattern. Soft green, yellow, and slate blue hues are complemented by a rich teal ground for a palette well-suited to a variety of rooms and styles. Fine handspun yarns of New Zealand blended wool are hand-knotted for heirloom quality.

100% wool. Hand knotted.  
Color: Teal

2'6 x 8'	\$855
3' x 5'	\$645
6' x 9'	\$2295
8' x 11'	\$3795
10' x 14'	\$5995



## Spring Rugs



### Fairfield

Reminiscent of a stonewall-lined path along a tranquil waterway, our Fairfield rug brings to life the panoramic views of nature. Pleasant neutral shades of natural, driftwood, gray heather with a hint of charcoal are complemented by navy and light teal hues. Spectacular texture abounds as each stripe is uniquely hand-tufted with five different mottled yarn combinations – creating a soft, heathered look in a plush loop pile.

Wool with a hint of nylon. Hand-tufted loop pile.  
Color: Teal

2'6 x 8'	\$545
3' x 5'	\$395
5' x 8'	\$995
8' x 10'	\$1995
9' x 13'	\$2995



## Spring Rugs



### Medina

Evoking the maze-like magic of the classic walled cities of North Africa, Medina tells a timeless tale with handspun yarns that are specially dyed from dark to light, creating rich gradations of color. A stunning accompaniment to multiple decors, hand-knotted in fine handspun yarns of New Zealand blended wool.

100% wool. Hand knotted.  
Color: Indigo

2'6 x 8'	\$855
3' x 5'	\$645
6' x 9'	\$2295
8' x 11'	\$3795
10' x 14'	\$5995





## Spring Rugs



### White Willow

A breezy botanical with an airy open feel, White Willow features delicate details of leaves and buds against a warm wheat background. This hand-woven soumak rug has an intricate traditional construction which involves wrapping weft yarns over and under the warp yarns, producing a unique chain-stitched appearance while providing enduring strength and softness. Crafted of 100% wool with a cotton warp, this rug is as luxurious and pliable as a plush blanket.

100% wool. Hand woven soumak.  
Color: Slate Blue

2'6" x 8'	\$765
3' x 5'	\$565
6' x 9'	\$1995
8' x 11'	\$3395
10' x 14'	\$5295





## Spring Rugs



### Artifacts

Primitive motifs of ancient art are replicated in the dramatic patterning of our Artifacts Rug. The dense loop pile construction has been randomly tip-sheared to enhance the rich textural appearance and does not shed. Hand-tufted of 100% jute in shades of deep indigo and undyed natural, this rugged design works well as an accent piece or in a large room.

100% jute. Hand-tufted, dense loop pile.  
Color: Indigo

2'6 x 8'	\$390
2' x 3'	\$115
3' x 5'	\$290
5' x 8'	\$775
8' x 10'	\$1545
9' x 13'	\$2295



## Spring Rugs



### Pebbles

Just like walking on a beach, this hand-woven indoor/outdoor rug is exceptionally textural and amazingly soft underfoot. Crafted of 100% polyester yarns made from recycled plastic bottles in a versatile neutral palette, Pebbles is an easy-care choice for eco-conscious homes.

100% polyester from recycled plastic bottles.  
Hand-woven.  
Color: Gray

2'6" x 8'	\$245
2' x 3'	\$72
3' x 5'	\$185
5' x 8'	\$495
8' x 10'	\$995





## Spring Rugs



### Carreaux

Ooh la rug! Awhirl with Provençal country style, our design was inspired by a vintage silk scarf and takes its name from the French word for tiles. Hand-hooked of pure wool, Carreaux is a classic mosaic, accented with black and red, and framed by a striking complementary border. 100% wool, hand-hooked.

100% wool. Hand-hooked, loop pile.  
Color: Black

2'6 x 8'	\$340
2' x 3'	\$89
3' x 5'	\$245
4' x 6'	\$375
5' x 8'	\$680
8' x 10'	\$1395
9' x 13'	\$1995





## Spring Rugs



### Antoine

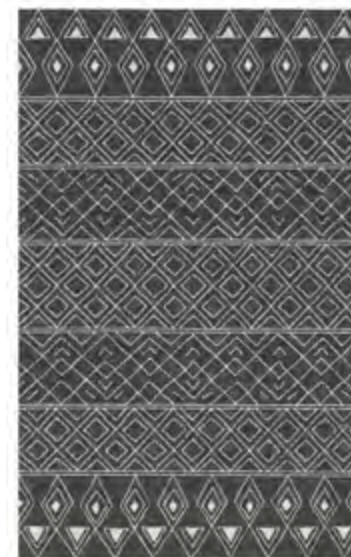
To create this dramatic geometric diamond stripe, we experimented with mottling shades of undyed natural and gray yarns, complemented by a contrasting black accent. The result is a stunningly updated effect, handsome and innovative, in neutral tones that will work with multiple decors. 100% wool, hand-hooked.

100% wool. Hand-hooked, loop pile.  
Color: Natural

2'6" x 8'	\$340
2' x 3'	\$89
3' x 5'	\$245
4' x 6'	\$375
5' x 8'	\$680
8' x 10'	\$1395
9' x 13'	\$1995



## Spring Rugs



### Nomad

Suggestive of the abstract line art of traditional Moroccan carpet patterns, this indoor/outdoor original will work anywhere in any season. Hand-hooked of 100% polypropylene fibers in a loop pile, Nomad weathers the elements with easy-care nonchalance. Charcoal background with ivory accents.

100% polypropylene. Hand-hooked, loop pile.  
Color: Charcoal

2'6" x 8'	\$175
2' x 3'	\$56
3'6" x 5'6"	\$175
5' x 8'	\$355
8' x 10'	\$695





## Spring Rugs



### Fauna

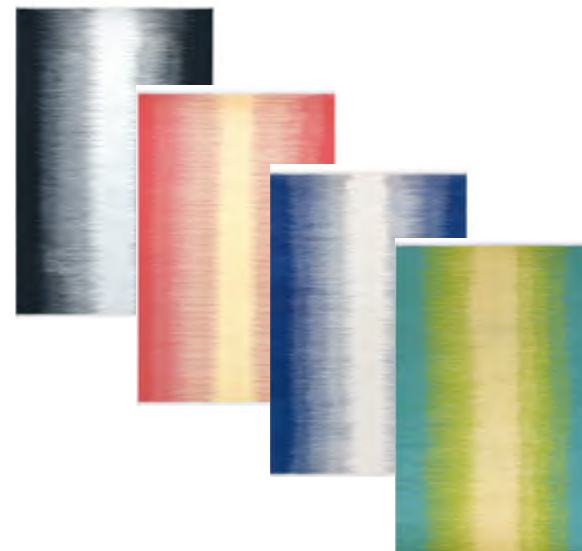
Whether placed indoors or outside, Fauna captures nature's botanical beauty in a palette of versatile neutrals against a buttercream ground. The easy-care polypropylene fibers are hand-hooked into a loop pile, creating a luxurious look with unique longstanding durability.

100% Polypropylene. Hand-hooked, loop pile.  
Color: Cream

2'6" x 8'	\$175
2' x 3'	\$56
3'6" x 5'6"	\$175
5' x 8'	\$355
8' x 10'	\$695



## Spring Rugs



### Daybreak

As nuanced as the glow of the sunrise on the horizon, Daybreak appears to radiate subtle changes in color from the center out. Woven by hand using polyester yarns that are crafted from recycled plastic bottles, this ecofriendly design is an ideal option for interior or exterior furnishings. Easy-care and reversible for twice the wear, it is finished with 1" fringe and is available in 4 colorways.

100% polyester from recycled plastic bottles.

Hand-woven.

Colors: Black, Blue, Coral, Lake

2'6 x 8'	\$295
2' x 3'	\$85
3' x 5'	\$215
5' x 8'	\$595
8' x 10'	\$1195





## Spring Rugs



### Kokomo

Water, sun, sand, sea... the essence of the tropics is captured in the fun colors and high spirits of our reversible easy-care design. Kokomo's fresh originality is a bright foundation for indoor living areas or al fresco décor. Environmentally friendly and produced from recycled plastic bottles, the 100% polyester yarns are hand-woven into an easy care rug that is finished with a 1" fringe.

100% polyester from recycled plastic bottles.  
Hand-woven.  
Colors: Blue, Multi

2'6 x 8'	\$295
2' x 3'	\$85
3' x 5'	\$215
5' x 8'	\$595
8' x 10'	\$1195





## Spring Bedding



### Flynn Duvet Cover & Shams Ivory

With its luxuriously lived-in look, our prewashed linen bedding is as enduringly beautiful as it is soft. Woven from pure French flax, its lovely rich natural color contrasts subtly with yarn-dyed stripes in Ivory or Lake. And, oh, the wondrous qualities of linen - over time the softness of the durable easy-care fibers will be enhanced with every laundering. Duvet cover features hidden corner ties and button closures.

100% linen, yarn-dyed stripe.  
Colors: Ivory, Lake

Twin 68" x 88"	\$420
Full/Queen 90" x 92"	\$475
King 108" x 92"	\$510
Std. Sham 20" x 26"	\$*80
King Sham 20" x 36"	\$*90
Euro Sham 26" x 26"	\$*80

\*Sham cover only, insert sold separately.





## Spring Bedding



### Flynn Duvet Cover & Shams Lake

With its luxuriously lived-in look, our prewashed linen bedding is feather light and enduringly beautiful. Woven from pure French flax, its lovely rich natural color contrasts subtly with yarn-dyed stripes. And, oh, the wondrous qualities of linen – over time the softness of the easy-care fibers will be enhanced with every laundering. Duvet cover features hidden corner ties and button closures.

100% linen, yarn-dyed stripe.  
Colors: Ivory, Lake

Twin 68" x 88"	\$420
Full/Queen 90" x 92"	\$475
King 108" x 92"	\$510
Std. Sham 20" x 26"	\$*80
King Sham 20" x 36"	\$*90
Euro Sham 26" x 26"	\$*80

\*Sham cover only, insert sold separately.





## Spring Bedding



### Reef Duvet Cover & Shams

Bring the serenity of an aquatic garden to the bedroom with this exclusive ensemble of pure cotton percale. The flowing print is a stylized underwater ballet of sea grass and coral in soothing Caribbean hues. Filled with cotton batting, the machine-washable quilt features a hand-stitched all-over diamond pattern. Matching quilted shams have zipper closures. Duvet cover is detailed with inside comforter ties and button closure; shams have center-back envelope opening. All shams are sold separately.

100% cotton percale.  
Color: Lake

Twin 68" x 88"	\$255
Full/Queen 90" x 92"	\$295
King 108" x 92"	\$350
Std. Sham 20" x 26"	\$*58
King Sham 20" x 36"	\$*78

\*Sham cover only, insert sold separately.





## Spring Bedding



### Reef Quilt & Shams

Bring the serenity of an aquatic garden to the bedroom with this exclusive ensemble of pure cotton percale. The flowing print is a stylized underwater ballet of sea grass and coral in soothing Caribbean hues. Filled with cotton batting, the machine-washable quilt features a hand-stitched all-over diamond pattern. Matching quilted shams have zipper closures. Duvet cover is detailed with inside comforter ties and button closure; shams have center-back envelope opening. All shams are sold separately.

100% cotton percale.  
Color: Lake

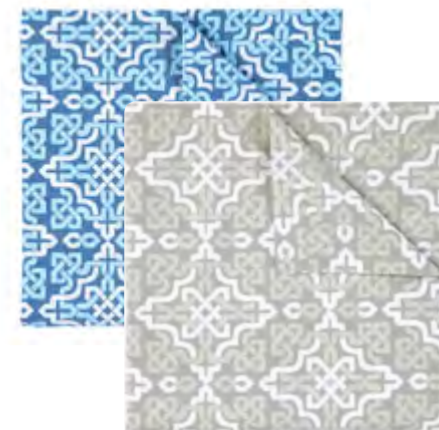
Twin 68" x 88"	\$298
Full/Queen 90" x 92"	\$388
King 108" x 92"	\$398
Std. Sham 20" x 26"	\$*78
King Sham 20" x 36"	\$*98

\*Sham cover only, insert sold separately.





## Spring Bedding



### Lennox Duvet Cover & Shams

The intriguing geometry of Celtic knots inspired the versatile pattern of our Lennox print. These top-of-bed ensembles in Pewter or Blue shades coordinate with our matching sheet sets or can complement a variety of solid colors. Cotton quilt is machine-stitched and offers a lightweight layer of warmth. Comforter cover has inside ties and button closures. Matching shams are sold separately. 100% cotton percale.

100% cotton percale.  
Colors: Blue, Pewter

Twin 71" x 91"	\$198
Full/Queen 93" x 95"	\$268
King 111" x 95"	\$298
Std. Sham 29" x 23"	\$*58
King Sham 39" x 23"	\$*68

Includes a 1.5" flange all around.

\*Sham cover only, insert sold separately.





## Spring Bedding



### Lennox Quilt & Shams

The intriguing geometry of Celtic knots inspired the versatile pattern of our Lennox print. These top-of-bed ensembles in Pewter or Blue shades coordinate with our matching sheet sets or can complement a variety of solid colors. Cotton quilt is machine-stitched and offers a lightweight layer of warmth. Comforter cover has inside ties and button closures. Matching shams are sold separately. 100% cotton percale.

100% cotton percale.

Colors: Blue, Pewter

Twin 68" x 88"	\$298
Full/Queen 94" x 98"	\$388
King 112" x 98"	\$398
Std. Sham 28" x 22"	\$*78
King Sham 38" x 22"	\$*98

Includes a 1" bound edge all around.

\*Sham cover only, insert sold separately.





# Spring Bedding



## Lennox Sheets

The geometric intricacies of Celtic knotting provided the inspiration for our intriguing tonal bedding print. Unique yet versatile, Lennox is rendered on soft cotton percale in your choice of Pewter or Blue. Our bedding is generously sized; universal fitted sheets have 15" pockets.

100% cotton percale.

Colors: Blue, Pewter

Twin Flat Sheet- 72"W x 102" L  
 Fitted Sheet 38"W x 75" L x 17" H \$174  
 Set includes a flat sheet, a fitted sheet,  
 and a single Standard Size Case.

Queen Flat Sheet- 96"W x 110" L  
 Fitted Sheet 60"W x 80" L x 17" H \$285  
 Set includes a flat sheet, a fitted sheet,  
 and a pair of Standard Size Cases.

King Size - Flat Sheet-114"W x 114" L  
 Fitted Sheet 76"W x 80" L x 17" H \$325  
 Set includes a flat sheet, a fitted sheet,  
 and a pair of King size cases.

Standard Case Pair - 21"W x 31" L \$65

King Case Pair- 21"W x 41" L. \$75



# Spring Bedding



## Pintuck Sheets

Elegant, clean and classic, a wide border of stitched-down pleats graces the top sheets and cases of organic cotton sateen bedding woven with a sumptuous 350 threads per inch. This simple yet sophisticated style goes with everything and feels wonderful to sleep in. 100% GOTS certified. Generously sized with extra deep 17" pockets on the universal fitted sheets.

100% GOTS certified organic cotton sateen, 350 thread count.

Color: White

Twin Flat Sheet- 72"W x 102" L  
Fitted Sheet 38"W x 78" L x 17" H \$175  
Set includes a flat sheet, a fitted sheet, and a single Standard Size Case.

Queen Flat Sheet- 96"W x 110" L  
Fitted Sheet 60"W x 80" L x 17" H \$240  
Set includes a flat sheet, a fitted sheet, and a pair of Standard Size Cases.

King Size - Flat Sheet-114"W x 114" L  
Fitted Sheet 76"W x 80" L x 17" H \$280  
Set includes a flat sheet, a fitted sheet, and a pair of King size cases.

Standard Case Pair- 21"W x 31" L \$45

King Case Pair- 21"W x 41" L. \$55





## Spring Bedding



### Florian Embroidered Sheets

The lovely symmetry of nature is celebrated in the beautifully embroidered borders of our Florian sheets. Woven of 100% GOTS certified organic cotton in 350 thread count sateen, this versatile and luxurious bedding will bestow elegant simplicity to an assortment of bedroom decors, from country cottage to seaside villa. Generously sized with extra deep 17" pockets on universal fitted sheets. Offered in Driftwood or Lake embroidery on white ground.

100% GOTS certified organic cotton sateen with embroidery. 350 thread count.  
Colors: Driftwood, Lake

Twin Flat Sheet- 72"W x 102" L  
Fitted Sheet 38" W x 78" L x 17" H \$210  
Set includes a flat sheet, a fitted sheet, and a single Standard Size Case.

Queen Flat Sheet- 96"W x 110" L  
Fitted Sheet 60" W x 80" L x 17" H \$275  
Set includes a flat sheet, a fitted sheet, and a pair of Standard Size Cases.

King Size - Flat Sheet-114"W x 114" L  
Fitted Sheet 76" W x 80" L x 17" H \$325  
Set includes a flat sheet, a fitted sheet, and a pair of King size cases.

Standard Case Pair- 21"W x 31" L \$55

King Case Pair- 21"W x 41" L. \$65



# Spring Bedding



## Ashton Embroidered Sheets

Satin chain-stitch embroidery makes a subtle yet stunning statement on our well-appointed Ashton sheets. The narrow border treatment is executed in Blue, Coral or Driftwood on a white ground of 100% GOTS certified organic cotton sateen with 350 threads per inch. Its classic simplicity offers endless variations when mixed and matched with quilts, coverlets and duvets. Generously sized with extra deep 17" pockets on universal fitted sheets.

100% GOTS certified organic cotton sateen with embroidery. 350 thread count.  
Colors: Blue, Coral, Driftwood

Twin Flat Sheet- 72"W x 102" L  
Fitted Sheet 38"W x 78" L x 17" H \$198  
Set includes a flat sheet, a fitted sheet,  
and a single Standard Size Case.

Queen Flat Sheet- 96"W x 110" L  
Fitted Sheet 60"W x 80" L x 17" H \$275  
Set includes a flat sheet, a fitted sheet,  
and a pair of Standard Size Cases.

King Size - Flat Sheet-114"W x 114" L  
Fitted Sheet 76"W x 80" L x 17" H \$315  
Set includes a flat sheet, a fitted sheet,  
and a pair of King size cases.

Standard Case Pair - 21"W x 31" L \$65

King Case Pair- 21"W x 41" L. \$55





## Spring Bedding



### Waffle Weave Coverlet

A textural and visual wonder, our Waffle Weave Coverlet is a modern layering piece for the bed. Intricately woven with the softest, most luxurious blend of linen and cotton, it adds a lightweight layer of warmth to the bedding ensemble. Each piece is garment dyed in soft shades of blush, pewter, and cream. The standard, King, and Euro Shams have a waffle weave on the front, with a cotton percale back in matching colors. The shams have a side envelope closure.

Colors: Lake

Twin	\$298
Full/Queen	\$378
King	\$450

Standard Sham	\$85
Sham King	\$120
Euro Sham	\$75



## Spring Bath



### Flynn Shower Curtain

Linen lends its Old World luxury to both bed and bath in our exclusive Flynn design. Fashioned of pure French flax fibers, yarn-dyed stripes are woven into an undyed natural ground. Finished with 12 embroidered buttonhole openings for shower rings (sold separately). Machine washable. Imported.

100% linen, yarn-dyed stripe.  
Colors: Ivory, Lake

Measures 72" W x 72" L

Shower Curtain \$140



## Spring Bath



### Reef Shower Curtain

Our underwater print on cotton percale is a perfect complement to any bath décor. Finished with 12 embroidered buttonhole openings for shower rings (sold separately). Imported.

100% cotton percale.  
Color: Lake

Measures 72" W x 72" L

Shower Curtain \$125



## Spring Bath



### Lennox Shower Curtain

Inspired by the ancient art of Celtic knotting, our Lennox print percale is a classic abstract pattern that works well in modern bathrooms. Finished with 12 embroidered buttonhole openings for shower rings (sold separately). Imported.

100% cotton percale.  
Colors: Blue, Pewter

Measures 72" W x 72" L

Shower Curtain \$125



## Spring Throw



### Off The Grid Throw Cream

Powered by its own beauty, Off the Grid lights up any room with its rich colorations and distinctive texture. Variegated yarns in shades of terracotta, lake, lavender and green are hand-woven in a popcorn-like stitch to create this invitingly soft and cozy throw. Finished on all sides with 4" long hand-knotted fringe.

100% acrylic.  
Color: Cream

Measures 50" W x 70" L     \$120



## Spring Pillows



### Xavier Pillow

The geometric artistry of embroidered shapes on a neutral ground is imaginatively punctuated by bright tufts in shiny red. An eye-catching original with subtle zest and plenty of sophisticated style. 100% woven cotton with embroidery. Down feather insert. Imported.

Cotton and linen with embroidery.  
Color: Natural

22" x 22"    \$155





## Spring Pillows



### Pebbles Pillow

Exceptionally textural. Outstandingly soft. Ecologically constructed. Hand-woven using polyester yarns made from recycled plastic bottles, this handsome indoor/outdoor design is an easy-care accent piece with a current sensibility. Solid woven backing and 22" square all-weather pillow insert included.

100% polyester from recycled plastic bottles.  
Hand-woven.  
Color: Gray

22" x 22"    \$125







## Spring Pillows



### Bryce Pillow

Applied in a free-flowing organic pattern, natural braided jute adds dimensional appeal to our attractive accent pillow. Removable woven cotton cover is finished with piped edges and a zipper opening. Down feather insert. Imported.

100% cotton.

Colors: Lake, Navy, Sun, Terracotta

22" x 22"    \$110





## Spring Pillows



### Clove Pillow

The decorative, multilayered beauty of macramé creates dynamic dimension for this eco-friendly indoor/outdoor design. Hand-knotted using an intricate clove-hitch stitch, the removable pillow cover is constructed of 100% polyester fibers that are recycled from plastic bottles. Solid woven backing with zipper opening. Weather-resistant 22"x22" insert included.

100% polyester from recycled plastic bottles.  
Hand-woven.  
Colors: Coral, Green, Lake, Natural, Yellow

22" x 22"     \$145







## Spring Pillows



### Topaz Pillow

Plush cotton velvet is opulently accented by the rich texture of chunky cotton chenille. Offered in two sizes and an array of gemstone shades, this elegant accent piece is a versatile companion to a variety of home furnishings. Down feather insert. Imported

100% cotton velvet.

Colors: Gold, Lake, Navy, Oyster, Pewter, Newport Red

14" x 20" \$110

22" x 22" \$145





## Spring Pillows



### Lana Pillow

An unexpected alliance of Old World glamor and natural simplicity, Lana contrasts an embroidered damask pattern in dense bouclé against a rustic homespun background of undyed linen. The result is modern yet refined. Spot clean only. 100% linen with viscose bouclé embroidery. Down feather insert. Imported.

100% linen base with boucle embroidery.  
Colors: Ivory, Lake, Navy

12" x 24"    \$110