



Fall 2018 Look Book

Fall Rugs



Indira

The colorful Indira rug is inspired by an antique Indian silk shawl with unusual and intriguing embroidery. Crafted in shades of azalea, plum, clover, and blue, the texture and design create a rug that is beautiful and invites bare feet. And the elephants? Indian folklore reveals that an elephant with their trunks raised represents a showering of good luck.

100% wool. Hand-tufted, cut & loop pile.
Color: Multi

2'6 x 8'	\$595
3' x 5'	\$465
5' x 8'	\$1,195
8' x 10'	\$2,245
9' x 13'	\$3,695



Fall Rugs



Savannah

A stunning centerpiece for any space, Savannah boasts hand spun and specially dyed yarns that lend natural color variation and a vintage look to the rug. The traditional floral design is enlivened by fresh jewel tones of berry and jade, harmonized with creamy yellow and soft pink. It is a beautiful centerpiece for a living, dining, or bed room.

100% wool. Hand-tufted, cut & loop pile.
Color: Multi

2'6 x 8'	\$545
3' x 5'	\$395
5' x 8'	\$995
8' x 10'	\$1,995
9' x 13'	\$2,995

Fall Rugs



Freestyle

The exuberant Freestyle rug, with its brushstrokes of deep saturated color, evokes the mood of an artist eloquently dancing a paint brush against a fresh canvas. Freestyle is a fresh, modern design—true art for the floor.

100% wool. Hand-tufted, cut & loop pile.
Color: Multi

2'6 x 8'	\$595
3' x 5'	\$465
5' x 8'	\$1,195
8' x 10'	\$2,245
9' x 13'	\$3,695



Fall Rugs



Jasper

Inspired by a traditional rug that was softened and faded over time by countless footsteps, Jasper has a burnished patina that evokes a modern, abstract design. Melodious yellows and camel tones embellished by silvery grays, hints of charcoal and black, are reminiscent of stately stonework. Washed by hand to enliven the variations in the hand-spun wool yarns, Jasper's delicate and natural beauty gains a soft hand.

100% wool. Hand knotted.
Color: Multi

2'6" x 8'	\$855
3' x 5'	\$645
6' x 9'	\$2,295
8' x 11'	\$3,795
10' x 14'	\$5,995

Fall Rugs



Carlton

Indigo and denim blues dance with lake and aqua tones to create a refreshing, timeless design. Carlton is at once tribal yet elegant. Variegated, space-dyed yarns emphasize the artisanal beauty of the pattern. Fine wool is hand-washed for a softer hand and a lustrous patina, creating a breathtaking statement on ancient designs.

100% wool. Hand knotted.
Color: Blue

2'6 x 8'	\$855
3' x 5'	\$645
6' x 9'	\$2,295
8' x 11'	\$3,795
10' x 14'	\$5,995



Fall Rugs



Florence

Inspired by the symmetry of classical ornamentation, a deep border in a stone color frames a Renaissance design that blends shades of green and aqua. The variegated, space-dyed yarns create an aged, artisanal appearance. In its final stage, each Florence rug is washed to give it a softer hand and a lustrous patina, and to bring out the color variations of the fine wool yarns.

100% wool. Hand knotted.
Color: Green

2'6 x 8'	\$855
3' x 5'	\$645
6' x 9'	\$2,295
8' x 11'	\$3,795
10' x 14'	\$5,995

Fall Rugs



Seville

Drawing on traditional geometric designs from the Lori tribes of Persia, the bold Seville is a statement worth noting. The saturated shades of red—the color of energy and passion—make this a standout piece in the modern home. Seville's deep color gradations bring sophistication and lasting appeal. This luminous rug is hand-woven with New Zealand and other fine wools and sheared into a plush cut pile for a luxurious look and feel.

100% wool. Hand-woven.
Color: Red

2'6 x 8'	\$595
3' x 5'	\$465
6' x 9'	\$1,395
8' x 11'	\$2,445
10' x 14'	\$3,695

Fall Rugs



Java

Our Java rug was inspired by the rug-weaving traditions of the Lori tribes of Persia, this revered folk-art design is stunning in deep espresso. Intricate symbols in the form of stylized trees and animals dance vibrantly along the border. A modern expression of the past, the warm tone makes Java a lively piece for the home. This luminous rug is hand-woven with New Zealand and other fine wools and sheared into a plush cut pile for a luxurious look and feel.

100% Wool. Hand-woven.
Color: Espresso

2'6" x 8'	\$595
3' x 5'	\$465
6' x 9'	\$1,395
8' x 11'	\$2,445
10' x 14'	\$3,695



Fall Rugs



Danube

Inspired by the rug-weaving traditions of the Lori tribes of Persia, Danube brings an energetic viewpoint to this handmade carpet. Danube infuses a collected mood with bold geometric design and the liveliness of saturated blues, from indigo to denim. This luminous rug is hand-woven with New Zealand and other fine wools and sheared into a plush cut pile for a luxurious look and feel.

100% wool. Hand-woven.
Color: Blue

2'6 x 8'	\$595
3' x 5'	\$465
6' x 9'	\$1,395
8' x 11'	\$2,445
10' x 14'	\$3,695

Fall Rugs



Canyon

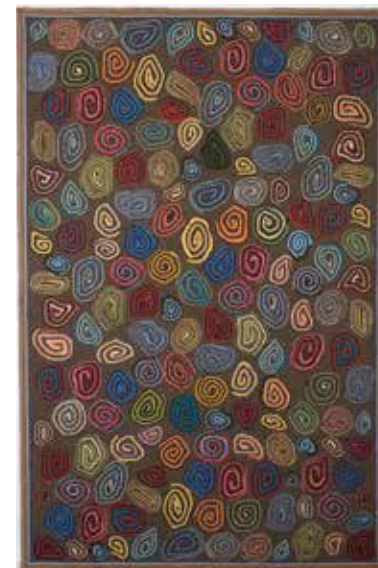
The sun-washed colors from landscape of the American Southwest and its contrasting clear blue sky come to life in our Canyon rug. Space-dyed yarns in variegated shades of terracotta, gold, and azure blue are intricately woven in a tweedy, geometric pattern. Canyon is a perfect design for those who love to mix warm and cool colors with amazing texture.

Wool with viscose novelty yarn. Hand-tufted, cut & loop pile.

Color: Multi

2'6 x 8'	\$595
3' x 5'	\$465
5' x 8'	\$1,195
8' x 10'	\$2,445
9' x 13'	\$3,695

Fall Rugs



Spirals

Our Spirals rug is well named: Bright multicolored swirls blossom from a background of darker un-dyed wool yarns. Framed with a colorful striped border, the playful rug is hand-hooked just as it would have been long ago. Using yarns in lively colors, Spirals is a modern take on a country tradition.

100% Wool. Hand-hooked.
Color: Multi

2'6 x 8'	\$340
2' x 3'	\$89
3' x 5'	\$245
4' x 6'	\$375
5' x 8'	\$680
8' x 10'	\$1,395
9' x 13'	\$1,995



Fall Rugs



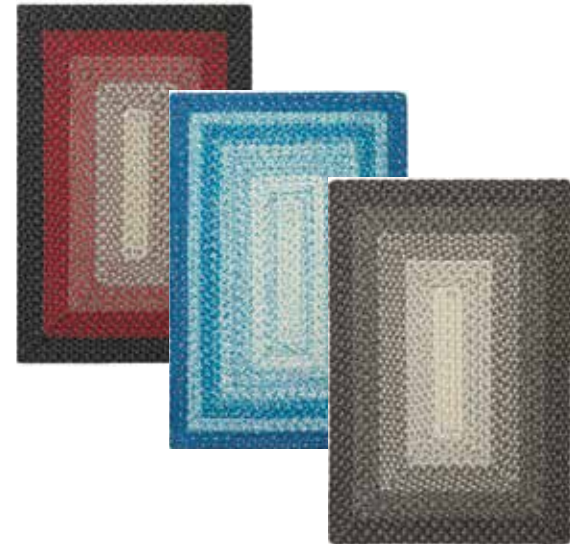
Pachisi

Inspired by pachisi, a medieval board game from India, our warm, hand-hooked rug brings handsome symmetry to the home. Adopting the patterns and colors of an antique handmade pachisi board, wool yarns in shades of cream, toffee, brown, and gray create a stylized take on the centuries-old cross-and-circle game board. A warm border of stripes frames the design.

100% Wool. Hand-hooked.
Color: Multi

2'6" x 8'	\$340
2' x 3'	\$89
3' x 5'	\$245
4' x 6'	\$375
5' x 8'	\$680
8' x 10'	\$1,395
9' x 13'	\$1,995

Fall Rugs



French Braid

Meticulously hand-braided in new and best-selling color palettes, these distinctive rugs evoke a French farmhouse – warm and welcoming. Based on the décor style found in country homesteads, these easy-care rugs are soft enough for a playroom, yet durable in high-traffic areas of the home.

100% Propylene. Hand-braided.

2'6 x 8'	\$135
2' x 3'	\$40
3'6 x 5'6	\$115
5' x 8'	\$275
8' x 10'	\$550

Fall Rugs



Donegal

Our perennially popular Tweedy rug is translated for indoor/outdoor use in our Donegal design. Super-textural mottled yarns are hand-hooked in dreamy lake or stately dark red to adorn the floor. Looped and tufted to feel soft underfoot and luxurious, this rug is beautiful and practical—the perfect area rug for kitchens, entryways, and porches.

100% polypropylene. Hand-hooked.
Color: Red, Blue

2'6 x 8'	\$175
2' x 3'	\$56
3'6 x 5'6	\$175
5' x 8'	\$355
8' x 10'	\$695



Summer Bedding



Kate Duvet Cover & Shams Blush

Create a dreamy haven with our Kate bedding in sunset colors of blush (shown), pewter, or lake, hand printed on a cream background on indulgent cotton percale. Evoking the feathery fronds, the eloquent design may be layered and coordinated for ultimate luxury. The quilt and shams are meticulously hand-stitched by craftswomen in northern India. The duvet cover has hidden button closures and corner ties. The duvet sham has an envelope closure, while the quilt sham has a zipper closure.

Twin 68" x 88" \$198

Full/Queen 90" x 92" \$268

King 108" x 92" \$298

Std. Sham 20" x 26" \$58*

King Sham 20" x 36" \$68*

*Sham cover only, insert sold separately.



Summer Bedding



Kate Quilt & Shams Blush

Create a dreamy haven with our Kate bedding in sunset colors of blush (shown), pewter, or lake, hand printed on a cream background on indulgent cotton percale. Evoking the feathery fronds, the eloquent design may be layered and coordinated for ultimate luxury. The quilt and shams are meticulously hand-stitched by craftswomen in northern India. The duvet cover has hidden button closures and corner ties. The duvet sham has an envelope closure, while the quilt sham has a zipper closure.

Twin 68" x 88"	\$248
Full/Queen 90" x 92"	\$378
King 108" x 92"	\$398
Std. Sham 20" x 26"	\$78*
King Sham 20" x 36"	\$98*

*Sham cover only, insert sold separately.



Summer Bedding



Kate Duvet Cover & Shams Pewter

Create a dreamy haven with our Kate bedding in sunset colors of blush, pewter (shown), or lake, hand printed on a cream background on indulgent cotton percale. Evoking the feathery fronds, the eloquent design may be layered and coordinated for ultimate luxury. The quilt and shams are meticulously hand-stitched by craftswomen in northern India. The duvet cover has hidden button closures and corner ties. The duvet sham has an envelope closure, while the quilt sham has a zipper closure.

Twin 68" x 88"	\$198
Full/Queen 90" x 92"	\$268
King 108" x 92"	\$298
Std. Sham 20" x 26"	\$58*
King Sham 20" x 36"	\$68*

*Sham cover only, insert sold separately.



Summer Bedding



Kate Quilt & Shams Pewter

Create a dreamy haven with our Kate bedding in sunset colors of blush, pewter (shown), or lake, hand printed on a cream background on indulgent cotton percale. Evoking the feathery fronds, the eloquent design may be layered and coordinated for ultimate luxury. The quilt and shams are meticulously hand-stitched by craftswomen in northern India. The duvet cover has hidden button closures and corner ties. The duvet sham has an envelope closure, while the quilt sham has a zipper closure.

Twin 68" x 88"	\$248
Full/Queen 90" x 92"	\$378
King 108" x 92"	\$398
Std. Sham 20" x 26"	\$78*
King Sham 20" x 36"	\$98*

*Sham cover only, insert sold separately.



Summer Bedding



Kate Duvet Cover & Shams Lake

Create a dreamy haven with our Kate bedding in sunset colors of blush, pewter, or lake (shown), hand printed on a cream background on indulgent cotton percale. Evoking the feathery fronds, the eloquent design may be layered and coordinated for ultimate luxury. The quilt and shams are meticulously hand-stitched by craftswomen in northern India. The duvet cover has hidden button closures and corner ties. The duvet sham has an envelope closure, while the quilt sham has a zipper closure.

Twin 68" x 88"	\$198
Full/Queen 90" x 92"	\$268
King 108" x 92"	\$298
Std. Sham 20" x 26"	\$58*
King Sham 20" x 36"	\$68*

*Sham cover only, insert sold separately.



Summer Bedding



Kate Quilt & Shams Lake

Create a dreamy haven with our Kate bedding in sunset colors of blush, pewter, or lake (shown), hand printed on a cream background on indulgent cotton percale. Evoking the feathery fronds, the eloquent design may be layered and coordinated for ultimate luxury. The quilt and shams are meticulously hand-stitched by craftswomen in northern India. The duvet cover has hidden button closures and corner ties. The duvet sham has an envelope closure, while the quilt sham has a zipper closure.

100% cotton percale.

Twin 68" x 88"	\$248
Full/Queen 90" x 92"	\$378
King 108" x 92"	\$398
Std. Sham 20" x 26"	\$78*
King Sham 20" x 36"	\$98*

*Sham cover only, insert sold separately.



Summer Bedding



Diamond Lattice Duvet Cover & Shams Blush

Serene and versatile, Diamond Lattice is printed on crisp white cotton percale to create a well-appointed bed. The small-scale, geometric design coordinates beautifully with classic and modern pieces. Mix and match the blush (shown), pewter, or lake shades with deeper colors for sophistication, lighter tones for an airy look. The duvet cover has hidden button closures and corner ties and its related sham has an envelope closure. The quilt is channel-stitched and its related sham has a zipper closure.

Twin 68" x 88"	\$198
Full/Queen 90" x 92"	\$268
King 108" x 92"	\$298
Std. Sham 20" x 26"	\$58*
King Sham 20" x 36"	\$68*

*Sham cover only, insert sold separately.



Summer Bedding



Diamond Lattice Quilt & Shams Blush

Serene and versatile, Diamond Lattice is printed on crisp white cotton percale to create a well-appointed bed. The small-scale, geometric design coordinates beautifully with classic and modern pieces. Mix and match the blush (shown), pewter, or lake shades with deeper colors for sophistication, lighter tones for an airy look. The duvet cover has hidden button closures and corner ties and its related sham has an envelope closure. The quilt is channel-stitched and its related sham has a zipper closure.

Twin 68" x 88"	\$248
Full/Queen 90" x 92"	\$378
King 108" x 92"	\$398
Std. Sham 20" x 26"	\$78*
King Sham 20" x 36"	\$98*

*Sham cover only, insert sold separately.



Summer Bedding



Diamond Lattice Duvet Cover & Shams Pewter

Serene and versatile, Diamond Lattice is printed on crisp white cotton percale to create a well-appointed bed. The small-scale, geometric design coordinates beautifully with classic and modern pieces. Mix and match the blush, pewter (shown), or lake shades with deeper colors for sophistication, lighter tones for an airy look. The duvet cover has hidden button closures and corner ties and its related sham has an envelope closure. The quilt is channel-stitched and its related sham has a zipper closure.

Twin 68" x 88"	\$198
Full/Queen 90" x 92"	\$268
King 108" x 92"	\$298
Std. Sham 20" x 26"	\$58*
King Sham 20" x 36"	\$68*

*Sham cover only, insert sold separately.



Summer Bedding



Diamond Lattice Quilt & Shams Pewter

Serene and versatile, Diamond Lattice is printed on crisp white cotton percale to create a well-appointed bed. The small-scale, geometric design coordinates beautifully with classic and modern pieces. Mix and match the blush, pewter (shown), or lake shades with deeper colors for sophistication, lighter tones for an airy look. The duvet cover has hidden button closures and corner ties and its related sham has an envelope closure. The quilt is channel-stitched and its related sham has a zipper closure.

Twin 68" x 88"	\$248
Full/Queen 90" x 92"	\$378
King 108" x 92"	\$398
Std. Sham 20" x 26"	\$78*
King Sham 20" x 36"	\$98*

*Sham cover only, insert sold separately.



Summer Bedding



Diamond Lattice Duvet Cover & Shams Lake

Serene and versatile, Diamond Lattice is printed on crisp white cotton percale to create a well-appointed bed. The small-scale, geometric design coordinates beautifully with classic and modern pieces. Mix and match the blush, pewter, or lake (shown) shades with deeper colors for sophistication, lighter tones for an airy look. The duvet cover has hidden button closures and corner ties and its related sham has an envelope closure. The quilt is channel-stitched and its related sham has a zipper closure.

Twin 68" x 88"	\$198
Full/Queen 90" x 92"	\$268
King 108" x 92"	\$298
Std. Sham 20" x 26"	\$58*
King Sham 20" x 36"	\$68*

*Sham cover only, insert sold separately.



Summer Bedding



Diamond Lattice Quilt & Shams Lake

Serene and versatile, Diamond Lattice is printed on crisp white cotton percale to create a well-appointed bed. The small-scale, geometric design coordinates beautifully with classic and modern pieces. Mix and match the blush, pewter, or lake (shown) shades with deeper colors for sophistication, lighter tones for an airy look. The duvet cover has hidden button closures and corner ties and its related sham has an envelope closure. The quilt is channel-stitched and its related sham has a zipper closure.

Twin 68" x 88"	\$248
Full/Queen 90" x 92"	\$378
King 108" x 92"	\$398
Std. Sham 20" x 26"	\$78*
King Sham 20" x 36"	\$98*

*Sham cover only, insert sold separately.



Summer Bedding



Emma Duvet Cover & Sham

Perfect for a peaceful night, Emma bedding was inspired by a vintage embroidered quilt. This graceful design in cool and soothing blues is hand printed on crisp, yet soft cotton percale for a modern take on an antique look. The quilt and shams are meticulously hand-quilted. The duvet cover has hidden button closures and corner ties. Both the quilt and duvet shams have back envelope closures.

Twin 68" x 88"	\$198
Full/Queen 90" x 92"	\$268
King 108" x 92"	\$298
Std. Sham 20" x 26"	\$58*
King Sham 20" x 36"	\$68*

*Sham cover only, insert sold separately.



Summer Bedding



Emma Quilt & Shams

Perfect for a peaceful night, Emma bedding was inspired by a vintage embroidered quilt. This graceful design in cool and soothing blues is hand printed on crisp, yet soft cotton percale for a modern take on an antique look. The quilt and shams are meticulously hand-quilted. The duvet cover has hidden button closures and corner ties. Both the quilt and duvet shams have back envelope closures.

Twin 68" x 88"	\$248
Full/Queen 90" x 92"	\$378
King 108" x 92"	\$398
Std. Sham 20" x 26"	\$78*
King Sham 20" x 36"	\$98*

*Sham cover only, insert sold separately.



Summer Bedding



Diamond Lattice Sheets

Serene and versatile, Diamond Lattice is printed on crisp white cotton percale, creating a well-appointed bed. This geometric pattern in sophisticated hues of blush, pewter and lake coordinates beautifully with both traditional and modern designs.

Colors: Blush, Pewter & Lake

Twin Flat Sheet- 72"W x 102" L
Fitted Sheet 38" W x 75" L x 17" H \$168
Set includes a flat sheet, a fitted sheet, and a single Standard Size Case.

Full/Queen Flat Sheet- 96"W x 110" L
Fitted Sheet 60" W x 80" L x 17" H \$248
Set includes a flat sheet, a fitted sheet, and a pair of Standard Size Cases.

King Size - Flat Sheet-114"W x 114" L
Fitted Sheet 76" W x 80" L x 17" H \$288
Set includes a flat sheet, a fitted sheet, and a pair of King size cases.

Standard Case - 21"W x 31" L \$55

King Case - 21"W x 41" L. \$65



Summer Bedding



Waffle Weave Coverlet

A textural and visual wonder, our Waffle Weave Coverlet is a modern layering piece for the bed. Intricately woven with the softest, most luxurious blend of linen and cotton, it adds a lightweight layer of warmth to the bedding ensemble. Each piece is garment dyed in soft shades of blush, pewter, and cream. The standard, King, and Euro Shams have a waffle weave on the front, with a cotton percale back in matching colors. The shams have a side envelope closure.
 colors: Pewter, Blush & Cream

Twin	\$298
Full/Queen	\$378
King	\$450

Standard Sham	\$85
Sham King	\$120
Euro Sham	\$75



Summer Bath



Kate Shower Curtain

Create a dreamy escape with glorious sunset colors of blush, pewter, or lake, hand printed on a cream background. The eloquent design evoking feathery fronds may be coordinated with our bedding and sheets for ultimate luxury. Twelve finished buttonhole style openings for shower hooks (sold separately). Imported. color: Blush

Measures 72" W x 72" L

Shower Curtain \$110



Summer Bath



Kate Shower Curtain

Create a dreamy escape with glorious sunset colors of blush, pewter, or lake, hand printed on a cream background. The eloquent design evoking feathery fronds may be coordinated with our bedding and sheets for ultimate luxury. Twelve finished buttonhole style openings for shower hooks (sold separately). Imported. w: Pewter

Measures 72" W x 72" L

Shower Curtain \$110



Summer Bath



Kate Shower Curtain

Create a dreamy escape with glorious sunset colors of blush, pewter, or lake, hand printed on a cream background. The eloquent design evoking feathery fronds may be coordinated with our bedding and sheets for ultimate luxury. Twelve finished buttonhole style openings for shower hooks (sold separately). Imported. color: Lake

Measures 72" W x 72" L

Shower Curtain \$110



Summer Bath



Diamond Shower Curtain

Serene and versatile, this geometric pattern coordinates beautifully with both traditional and modern design. The sophisticated hues of blush, pewter and lake printed on a crisp white ground create an air of relaxation. The color palette complements our sheets and bedding. Twelve finished buttonhole style openings for shower hooks (sold separately). Imported. color: Blush

Measures 72" W x 72" L

Shower Curtain \$110



Summer Bath



Diamond Shower Curtain

Serene and versatile, this geometric pattern coordinates beautifully with both traditional and modern design. The sophisticated hues of blush, pewter and lake printed on a crisp white ground create an air of relaxation. The color palette complements our sheets and bedding. Twelve finished buttonhole style openings for shower hooks (sold separately). Imported. color: Pewter

Measures 72" W x 72" L

Shower Curtain \$110



Summer Bath



Diamond Shower Curtain

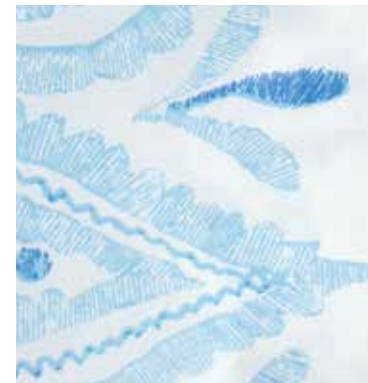
Serene and versatile, this geometric pattern coordinates beautifully with both traditional and modern design. The sophisticated hues of blush, pewter and lake printed on a crisp white ground create an air of relaxation. The color palette complements our sheets and bedding. Twelve finished buttonhole style openings for shower hooks (sold separately). Imported. color: Lake

Measures 72" W x 72" L

Shower Curtain \$110



Fall Bath



Emma Shower Curtain

Inspired by a vintage embroidered quilt, this graceful design in cool and soothing blues is hand printed on a crisp white ground. The color palette complements our sheets and bedding. Twelve finished buttonhole style openings for shower hooks (sold separately). Imported. color: Blue

Measures 72" W x 72" L

Shower Curtain \$110



Fall Throw



Off The Grid Throw

The delicious textures and delightful colors of the Park Throw make it an inviting accent for any room. Variegated yarn is hand-woven in a popcorn-like stitch, giving this throw its distinctive texture and coloration. Azalea, plum, clover, blue—the vibrant colors du jour of joy and celebration are woven into this soft, generous throw. It's finished with a long hand-knotted fringe. Imported.

Measures 50" W x 70" L \$120

Fall Pillows



Indira Pillow

A universal symbol of good fortune, the joyful Indira with raised trunk is hand-embroidered on plush cotton velvet in a vibrant plum color. Contrast cording and tassels celebrate the exotic imagery of this one-of-a-kind accessory.

22" x 22" \$145



Fall Pillows



Maze Pillow

The Maze pillow makes a bold color statement in a room. Luxurious cotton velvet is appliquéd and embroidered to create a geometric design. Maze adds vitality to a sofa or wing chair, yet is soft and huggable on a bed. Zipper closure is hidden in a side seam.

Colors: Pewter, Black, Navy & Jade.

22" x 22" \$165



Fall Pillows



Breckenridge Pillow

Inspired by the deep earth tones of the Arizona desert, Breckenridge comes in a myriad of glorious saturated colors, inviting you to make a cozy mountain of pillows to relax on. Super-soft wide-wale corduroy encases a luxurious down and feather insert. The exposed zipper on a side seam has a soft leather pull tab to complete the casual look.

Colors: Choose from Plum, Copper, Leaf, Blue, Black, Vanilla, or Salsa.

22" x 22"	\$145
14" x 20"	\$125



Fall Pillows



Tanner Pillow

The soft sheen of supple leather in saturated colors and the textural quality of natural cowhide make the Tanner pillow a study in contrasts. The exposed zipper with a fringed leather pull opens to reveal a soft down and feather insert. The Southwest meets modern Scandinavia in this unique cushion, at once cozy and handsome.

Colors: Red, Toffee, Blue & Black.

22" x 22" \$225