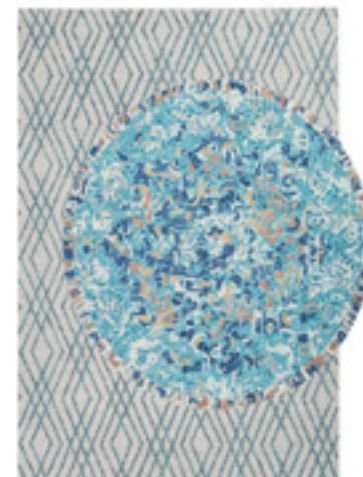




## Fall 2019 Look Book



## Fall Rugs



### Duet

Our newest creative concept is a contemporary masterpiece, pairing two unique shapes in contrasting patterns for a distinctive layered look. Using a cut-and-loop pile with an ultra-textural appearance, an abstract medallion of Persian inspiration combines coastal colors highlighted by neutral accents. This circle is offset against a rectangular backdrop featuring special mottled yarns in a geometric lattice design on a natural, undyed ground. The resulting effect is stunning and a true work of art; Duet will grace any décor with its one-of-a-kind presence.

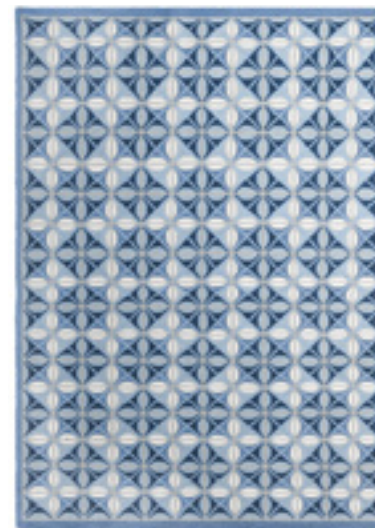
100% wool. Hand-tufted, cut & loop pile. Color: Lake

3 x 8'	\$675
6'6 x 9'	\$1,625
8' x 10'	\$2,295





## Fall Rugs



### Delphine

A rhapsody of true blues, our traditional French tile pattern lends its graceful geometry to Delphine, a classic, hand-woven Soumak rug. Weft yarns are wrapped over and under warp yarns for the intricate construction, providing pliable strength and luxurious softness while producing a unique chain-stitched appearance. Crafted of 100% wool.

100% wool. Hand-woven soumak. Color: Blue

2'6 x 8'	\$765	8' x 11'	\$3,395
3' x 5'	\$565	10' x 14'	\$5,295
6' x 9'	\$1,995		





## Fall Rugs



### Gemstones

Brilliant colors and high quality hand-weaving techniques are the hallmarks of the Lori tribes of Persia. Our Gemstones Rug celebrates these ancient traditions with a glorious contemporary sensibility. Overtufted with a subtle geometric motif, the hand-woven jewel-tone blocks are sheared into a plush-cut pile for a luxurious velvety hand. Constructed without a backing, this handcrafted original has the comforting feel of a soft, heavy blanket, as well as the durability and beauty of heirloom floor art.

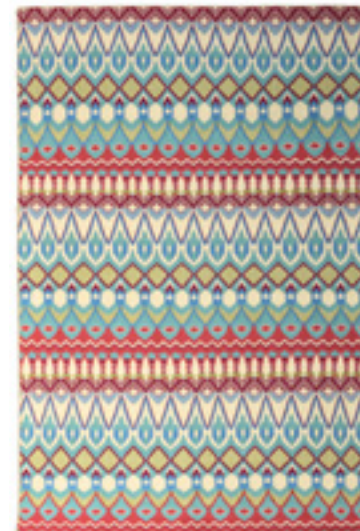
100% wool. Hand-woven. Color: Multi

2'6 x 8'	\$595	8' x 11'	\$2,445
3' x 5'	\$465	10' x 14'	\$3,695
6' x 9'	\$1,395		





## Fall Rugs



### Asha

As exotic as a nomadic caravan, our original Soumak rug is a colorful journey along the Silk Road of design inspiration, richly rendered in signature shades. The beautiful chain-stitched appearance is produced by traditional hand-weaving methods that involve wrapping weft yarns around warp yarns; this intricate fabrication provides long-lasting luxury and enduring softness. Handcrafted of 100% wool with a cotton warp, Asha adds welcoming warmth and intrigue to any room.

100% wool. Hand woven soumak. Color: Multi

2'6 x 8'	\$765	8' x 11'	\$3,395
3' x 5'	\$565	10' x 14'	\$5,295
6' x 9'	\$1,995		





## Fall Rugs



### Kuba

Evocative of Central African arts, this graphic rug was inspired by the handmade charm of an actual antique Kuba cloth, which is a traditional fabric woven from raffia palm leaves. Beautifully hand-tufted of 100% jute with a dense loop pile; the rug surface has been randomly tip-sheared to replicate the variations in texture and design of the original and is enhanced by primitive patterning in warm browns and natural earth tones. Enjoy the beauty of this ancient folk art updated for modern home furnishings.

100% jute. Hand-tufted loop pile. Color: Espresso

2'6 x 8'	\$390	2' x 3'	\$115
5' x 8'	\$775	3' x 5'	\$290
8' x 10'	\$1,545	9' x 13'	\$2,295





## Fall Rugs



### Max

Make a statement with Maximilian, a great and gorgeous African leopard, depicted here in his native jungle habitat and vibrantly visualized with Company C color and creativity. This special edition rug honors the beauty of this endangered species in lush hand-tufted luxury. Chunky yarns are space-dyed in rich brown shades for the loop-pile background, against which the vivid foliage stands out in a contrasting tufted cut pile.

100% Wool. Hand-tufted cut & loop pile. Color: Multi

5' x 8'

\$1,195





## Fall Rugs



### Plume

A colorful collage of fantasy feathers is hand-hooked on a mottled two-tone background. This imaginative exclusive by Company C is artisan-crafted of pure wool and complements a diverse variety of interiors.

100% wool. Hand-hooked. Color: Multi

2'6" x 8'	\$358	5' x 8'	\$715
2' x 3'	\$95	8' x 10'	\$1,465
3' x 5'	\$258	9' x 13'	\$2,095





## Fall Rugs



### Tango

The fearlessly partnering of a pattern with a plaid defines the bold Bohemian layering look of Tango. This singular original is an all-in-one shaped rug with the look of two pieces. Hand-tufted in cut pile, a colorful folkloric medallion motif of high twisted wool yarns is inset into a multi-hued diagonal plaid of space-dyed yarns, which are mottled with sari fabric remnants to achieve a uniquely textural appearance.

100% wool. Hand-tufted, cut & loop pile. Color: Multi

3 x 8'	\$675
6'6 x 9'	\$1,625
8' x 10'	\$2,295





## Fall Rugs



### Bracken

The natural organic beauty of ferns on the forest floor is suggested by the muted palette and soft abstract shapes of Bracken. Meticulously constructed using traditional rug-making methods, each knot of this plush design is individually tied by hand to ensure long-lasting luxury and enduring softness. A versatile selection, suitable for any season, in neutral grays and warm camel.

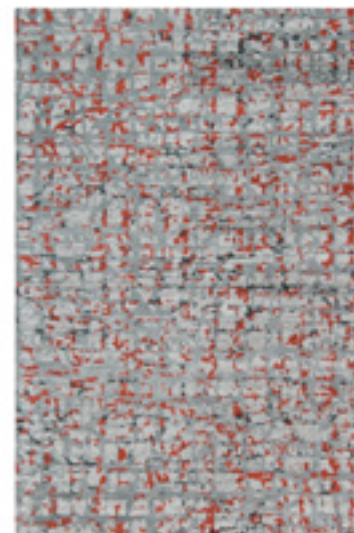
100% wool. Hand knotted. Color: Camel

2'6 x 8'	\$855	8' x 11'	\$3,795
3' x 5'	\$645	10' x 14'	\$5,995
6' x 9'	\$2,295		





## Fall Rugs



### Cityscape

Capturing the abstract complexity of urban topography, the contemporary design and color scheme of Cityscape suggests street scenes and smoky skies with a flash of bright lights. Undyed natural yarns are combined with cool grays, warm reds, and black accents into a luxurious hand-knotted rug of heirloom quality with an opulent hand.

100% wool. Hand knotted. Color: Gray

2'6" x 8'	\$855	8' x 11'	\$3,795
3' x 5'	\$645	10' x 14'	\$5,995
6' x 9'	\$2,295		





## Fall Rugs



### Gabriella

Integrating traditional Uzbek rug patterning with the lovely intricacies of an Ikat damask design, Gabriella's global good looks are reminiscent of a collector's find on an adventurous world tour. The striking color palette contrasts two shades of blue with ivory accents against a warm toffee ground. Hand-woven using Soumak techniques for a rug that will stand the tests of time and foot traffic.

100% wool. Hand-woven soumak. Color: Toffee

2'6 x 8'	\$765	8' x 11'	\$3,395
3' x 5'	\$565	10' x 14'	\$5,295
6' x 9'	\$1,995		





## Fall Rugs



### Cranes

Known as “the bird of happiness” in Japanese culture, the crane represents good fortune and longevity. Inspired by this mystical creature, we used the artwork of an intricate vintage wood-cut from Japan and reinterpreted it as a sumptuous hand-knotted rug. The golden toffee-hued background is the perfect complement to the washed-down blues and ivories evocative of Far Eastern art and textile design.

100% wool. Hand-knotted, loop pile. Color: Toffee

2'6 x 8'	\$855	8' x 11'	\$3,795
3' x 5'	\$645	10' x 14'	\$5,995
6' x 9'	\$2,295		





## Fall Bedding



### Keiko Duvet Cover, Quilt & Shams

Honoring the ancient art of indigo-dyed textiles, our Keiko bedding separates are a striking reproduction of a vintage batik medallion pattern. Printed on pure cotton percale for a soft hand and authentic appearance, this original design offers classic appeal and dramatic good looks. Duvet cover is detailed with inside comforter ties and button closure; sham has center-back envelope opening. The machine washable quilt is filled with cotton batting and features a hand-stitched all-over diamond pattern. Matching quilted shams have zipper closures. All shams are sold separately.

100% cotton percale, printed. Colors: Navy

Duvet		Quilt	
Twin 71" x 91"	\$225	Twin 68" x 88"	\$298
Full/Queen 93" x 95"	\$278	Full/Queen 94" x 98"	\$388
King 108" x 95"	\$310	King 112" x 98"	\$398
Std. Sham 29" x 23"	\$58*	Std. Sham 28" x 22"	\$88*
King Sham 39" x 23"	\$78*	King Sham 38" x 22"	\$98*
Includes a 1.5" flange all around		Includes a 1" bound edge all around	

\*Sham cover only, insert sold separately.





## Fall Bedding



### Leighton Coverlet & Shams

To create this multi-seasonal bed cover, we've reconstructed a plaid design to give it an edgier modern appearance. Jacquard weaving accentuates the textural geometry of this lightweight layering piece in shades of gray and cream with a hint of slate blue. A handsome top-of-the-bed treatment in a blend of 60% cotton/40% linen, suitable for any time of the year.

Cotton and linen blend. Color: Gray

Twin 72" x 95" \$298

Full/Queen 103" x 96" \$420

King 114" x 100" \$460

Includes a 1" hemmed edge

Std. Sham 23.5" x 29.5" \$98\*

King Sham 23.5" x 39.5" \$138\*

European Sham 28.5" x 28.5" \$98

Includes a 1.25" flange all around

\*Sham cover only, insert sold separately.





## Fall Bedding



### Seurat Duvet Cover, Quilt & Shams

Pointillism lends an impressionistic sensibility to these original bedding separates. The warm multi-colored palette is a cheerful and inviting variation printed on pure cotton percale. Duvet cover is detailed with inside comforter ties and button closure; sham has center-back envelope opening. The machine washable quilt is filled with cotton batting and features a hand-stitched all-over diamond pattern. Matching quilted shams have zipper closures. All shams are sold separately.

100% cotton percale, printed. Colors: Multi

Duvet		Quilt**	
Twin 71" x 91"	\$225	Twin 68" x 88"	\$298
Full/Queen 93" x 95"	\$278	Full/Queen 94" x 98"	\$388
King 111" x 95"	\$310	King 112" x 98"	\$398
Std. Sham 29" x 23"	\$58*	Std. Sham 28" x 22"	\$88*
King Sham 39" x 23"	\$78*	King Sham 38" x 22"	\$98*
Includes a 1.5" flange all around		Includes a 1" bound edge all around	

\*Sham cover only, insert sold separately.





## Fall Bedding



### Alyssa Euro Shams

Intricate latticework adds dimensional intrigue to a versatile accent piece, designed for mixing and matching. Machine embroidered in a two-tone trellis design on a natural, undyed base of 60% linen/40% cotton, Alyssa incorporates colors that coordinate with all of our bedding collections. Fits a 26" square pillow insert.

Linen and cotton. Colors: Blue, Lake, Natural

Euro Sham 28" x 28"     \$88

Includes a 1" flange.

\*Sham cover only, insert sold separately.





## Fall Bath



### Keiko Shower Curtain

A vintage indigo-dyed original was the inspiration for the navy and white batik print of our cotton percale shower curtain. Finished with 12 embroidered buttonhole openings for shower rings (sold separately) Machine washable. Imported.

Color: Navy

### Seurat Shower Curtain

An artful pattern of swirling dots brings to mind pointillism paintings of sunlit warmth. This lively print is rendered on 100% cotton percale and finished with 12 embroidered buttonhole openings for shower rings (sold separately). Machine washable. Imported.

Color: Multi

100% cotton percale, printed. Measures 72" W x 72" L

Shower Curtain \$125





## *Fall Throw*



### **Off The Grid Throw Chocolate**

Powered by its own beauty, Off the Grid lights up any room with its rich colorations and distinctive texture. Variegated yarns are hand-woven in a popcorn-like stitch to create this invitingly soft and cozy throw. Finished on all sides with 4" long hand-knotted fringe.

Color: Chocolate

### **Park Throw Black**

The delicious textures and delightful colors of the Park Throw make it an inviting accent for any room. Variegated yarn is hand-woven in a popcorn-like stitch, giving this throw its distinctive texture and coloration. It's finished with a long hand-knotted fringe. Imported.

Color: Black

100% acrylic.  
Measures 50" W x 70" L    \$120



## Fall Pillows



### Catalina Pillow

A colorful network of space-dyed boucle yarns on softly nubbled ivory cotton provides textural interest and eye-catching beauty to this versatile furnishings accessory. Down feather insert. Imported.

100% cotton with boucle yarns. Color: Cream

22" x 22" \$135



### Seesaw Pillow

Curvaceous arcs of handmade woven binding replicate the textural look of ribbon candy for this spectacular pillow. The multi-colored display is further enhanced by embroidered detailing on the slubbed cotton canvas background. Hidden zipper closure. Down feather insert. Imported.

100% cotton. Colors: Multi

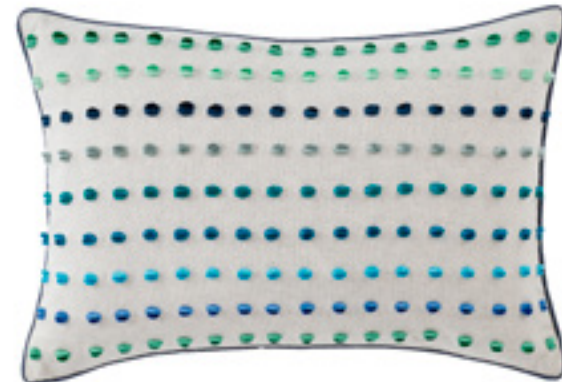
22" x 22" \$135



### Starry Night Pillow

An artful design that celebrates the swirling depths of the nighttime sky on a canvas of overdyed indigo cotton. Raised medallions are fashioned with an intricate Indian embroidery technique called "kirin dori" that uses thin twisted cording to create dimensional beauty. Choose from a 22" square or 16" x 26" rectangle. 100% cotton with solid navy back and hidden zipper closure. Down feather insert. Imported. 100% cotton. Colors: Indigo

16" x 26" \$130 22" x 22" \$135



### Raindrop Pillow

Showowered with lustrous rows of cut-embroidered tufting against a natural cotton/linen ground, this fun pillow is a fresh, bright accent piece. The brilliant blues and luminous greens coordinate with a variety of color schemes. Down feather insert. Imported.

100% Cotton with embroidery. Color: Blue

14" x 20" \$110



## Fall Pillows



### Congo Pillow

Imagine the circuitous routes of intersecting waterways meandering through the heart of the African jungle...and that is the sensibility of our Congo Pillow. Appliqued rivers of dark chocolate brown velvet are blanket-stitched to a slubbed cotton background for a look that is both equal parts timelessly primitive and stunningly present day. Hidden zipper closure. Down feather insert. Imported. Cotton/linen. Colors: Black Bean

22" x 22" \$135



### Wesley Pillow

Sewn of cowhide squares in warm variations of toffee and natural, our patchwork pillow offers an unexpected splash of rustic refinement. Crafted from real leather, each pillow is a unique work of art, unlike any other. Backed with solid toffee leather. Hidden zipper closure. Down feather insert. Due to the natural materials use to make this pillow, there will be color variances. Imported. Cowhide and leather. Colors: Toffee

22" x 22" \$245



### Speckles Pillow

The inherent patterns and tactile softness of natural cowhide give this dramatic statement piece its recognizable singular beauty. As in nature, each pillow will have its own unique markings. Backed with black leather. Hidden zipper closure. Down feather insert. Due to the natural materials use to make this pillow, there will be color variances. Imported. Cowhide and leather. Colors: Black

22" x 22" \$245



### Steppe Pillow

As elegant as a beautifully-designed formal staircase, our Steppe pillow features sections of real leather in a gradient of colors from soft yellow to deep burgundy, intermingled with shades of gray. A modern masterpiece, it is a luxurious accoutrement for the home. Backed with solid leather. Hidden zipper closure. Down-feather insert included. Due to the natural materials use to make this pillow, there will be color variances. Imported. Cowhide and leather. Colors: Spice

22" x 22" \$245



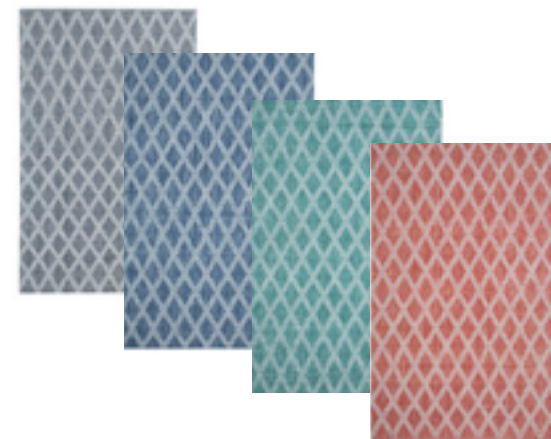


# Fall 2019 Look Book





## Fall Rugs



### Harlequin

Diamonds are everyone's best friend when they are the indoor/outdoor kind! Our easy-care, high performance Harlequin Rug is the best of all worlds – hand-woven in a classic diamond design but updated with variegated heathered yarns of 100% polyester made from recycled plastic bottles. A unique weaving technique creates a feel that is as soft and textural as any natural fiber, yet can literally be hosed off for easy cleaning.

100% polyester from recycled plastic bottles. Hand-woven.  
Colors: Gray Heather, Indigo, Lake, Newport Red

2'6 x 8'	\$295
2' x 3'	\$85
3' x 5'	\$215
5' x 8'	\$595
8' x 10'	\$1,195







## Fall Pillows



### Harlequin Pillow

Dimensional texture and a super-soft feel define this eco-friendly indoor/outdoor design. Thick, pliable yarns are crafted into popcorn loops, braided trim and chainstitch detailing for a distinctive accent piece, whether inside your home or outside. Best of all, the 100% polyester fibers are made from recycled plastic bottles, offering weather-resistance and easy cleaning. Solid woven backing. 22" square. All-weather pillow insert included.

100% polyester made from recycled plastic bottles.  
Colors: Gray Heather, Indigo, Lake, Newport Red

22" x 22"    \$135

