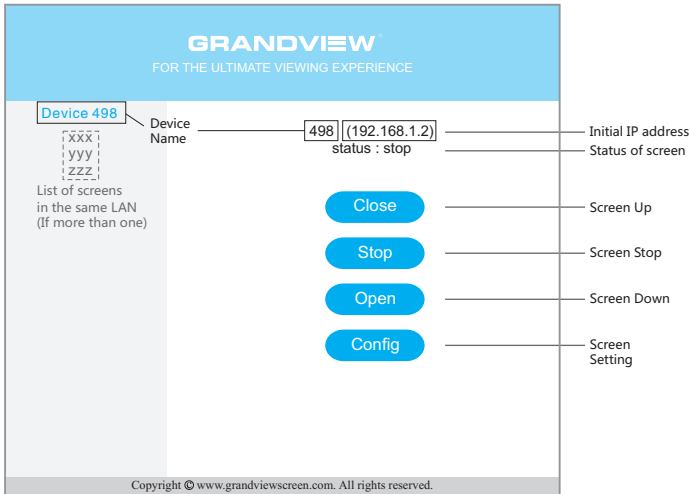


Default Setting:

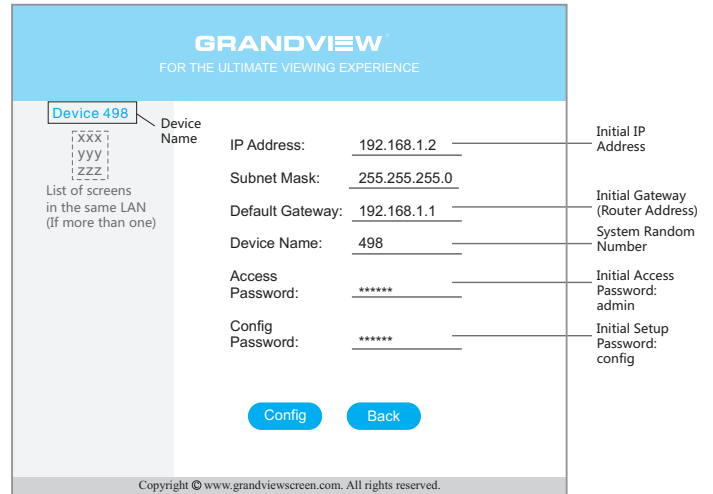
Initial IP address: 192.168.1.2
 Default gateway: 192.168.1.1
 Initial access password: admin
 Initial setup password: config

Control Code:

Screen close: 192.168.1.2/close.js
 Screen stop: 192.168.1.2/stop.js
 Screen open: 192.168.1.2/open.js



Page 1: Control Options



Page 2: Config Options

How to connect

CASE 1: The IP address of your Router is "192.168.1.1", and IP address "192.168.1.2" is available.

- ▶ **Step 1:** Connect the screen with the Router via LAN cable.
- ▶ **Step 2a:** If you are using phone, tablet or computer, make sure they are connecting to the same router through LAN or WIFI, type the IP address "192.168.1.2" in browser to visit the screen with access password "admin".
- ▶ **Step 2b:** If you are using central control system, use the control code after setting up the connection.

CASE 2: If you need to change the IP address of the screen to fit in the destined router IP range.

For example, your router address is "192.168.0.1" and you have "192.168.0.100" available, you would need to:

- ▶ **Step 1:** Set a new IP address for the screen.
 - a: Connect the screen with computer through LAN cable.
 - b: Set the IP address of the computer to "192.168.1.xxx" ("xxx" can be 1 to 255 except 2).
 - c: Type the IP address "192.168.1.2" in browser enter access password "admin".
 - d: Choose "Config" and enter the setup password "config".
 - e: Change the IP address to "192.168.0.100" and set Default gateway to "192.168.0.1".

You can also change the access passwords, setup passwords or name of the screen on this page.
- ▶ **Step 2:** Connect the screen to the Router via LAN cable.
- ▶ **Step 3a:** If you are using phone, tablet or computer, make sure they are connecting to the same router through LAN or WIFI, type the new IP address "192.168.0.100" in browser to visit the screen with access password "admin" (or the new password you changed in Step e).
- ▶ **Step 3b:** If you are using central control system, use the control code above after setting up the connection.

How to restore to default setting

Press the manual switch under the screen (circuit board side) for 5 seconds until you see the screen slightly move up and down once, that means the screen is restored to default setting.