



spring 2017 look book

Spring Rugs



Chelsea

Chelsea Hand-Tufted Rug

Named after New York's famous flower market, and festooned with hand-picked blooms artfully arranged to create the spectacular layout in our signature chunky high-twist wool yarns. The neutral tweedy background of this hand-made rug is crafted of natural un-dyed wool, and hand tufted in a dense loop pile. A botanical beauty that will fast become the art of any room, just like that.

100% wool, hand-tufted, cut & loop pile.

Color: Multi

• 2'6 x 8'	\$595
• 3' x 5'	\$465
• 5' x 8'	\$1,195
• 8' x 10'	\$2,445
• 9' x 13'	\$3,695



Spring Rugs



Melange

A modern mix. An over-scaled abstract pattern and an explosion of color create quite the masterpiece to behold. Densely hand tufted in a cut and loop pile construction (with the same surface height) for subtle texture. A wonderful way to bring light and color into the home.

100% wool, hand-tufted cut & loop pile. Color: Multi

• 2'6" x 8'	\$545
• 3' x 5'	\$425
• 5' x 8'	\$995
• 8' x 10'	\$2,055
• 9' x 13'	\$2,995



Spring Rugs



Eden

Here's a design equation: take one pleasing paisley pattern in six shades of blue, ivory and pewter. Add intricate construction techniques including cut and loop pile, embroidery and Indian Chindi (strips of boiled wool fabric) all tufted through the canvas. What do you get? A spellbinding, earthly delight that certainly earns its name of Eden.

95% wool, 5% wool viscose, hand-tufted,
cut & loop pile.
Color: Blue

• 2'6 x 8'	\$595
• 3' x 5'	\$465
• 5' x 8'	\$1,195
• 8' x 10'	\$2,445
• 9' x 13'	\$3,695





Spring Rugs



Granite

Don't be fooled by its name! Our ultra-soft beauty is a treat for the feet, not to mention the eyes. This artsy rug mixes the look of raw, natural mineral elements with the tactile softness of wool. Combining un-dyed, hand-spun wool with a unique hand-tufted loop pile and cross-looped construction, we've created a rug that will rock any space you place it.

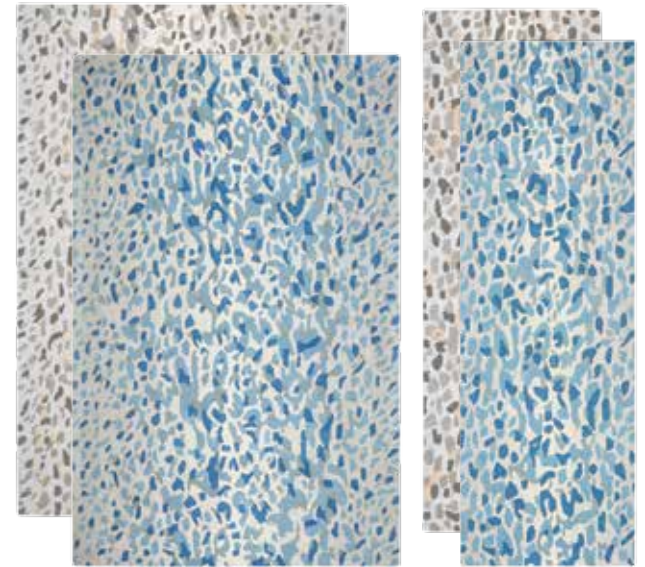
70% hand-spun wool, 30% viscose, hand-tufted with loop pile. Color: Gray

- 2'6" x 8' \$545
- 3' x 5' \$425
- 5' x 8' \$995
- 8' x 10' \$2,055
- 9' x 13' \$2,995





Spring Rugs



Catwalk

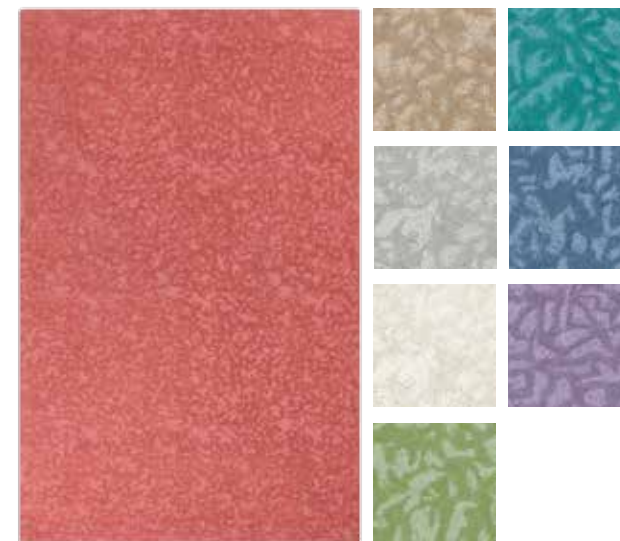
Take a walk on the wild side with our spot-on rug that takes its cue from edgy animal prints. Hand tufting in either varying shades of blue, or hues of charcoal, pewter and driftwood, creates an elegant ombred effect in blurred neutral tones.

100% Wool, hand-tufted.
Color: Pewter & Blue (shown)

- 2'6" x 8' \$545
- 3' x 5' \$425
- 5' x 8' \$995
- 8' x 10' \$2,055
- 9' x 13' \$2,995



Spring Rugs



Crackle

Snappy texture and a colorful pop! Densely hand tufted featuring a cut and loop pile construction, our tone-on-tone abstract pattern mimics the texture of the vintage painting technique, creating a visual masterpiece in eight gorgeous shades.

100% wool, hand-tufted cut & loop pile.
Colors: Newport Red, Driftwood, Pewter, Oyster, Grass, Peacock, Blue Iris & Lavender.

- 2'6 x 8' \$425
- 5' x 8' \$865
- 8' x 10' \$1,745
- 9' x 13' \$2,545



Spring Rugs



Dew Drop

Traditional Indian paisley goes serene this season in soft tonal neutrals, artfully placed to create a flowing and graceful pattern. Understated and elegant with loads of texture to add dimension and depth to any space. This 100% jute rug is hand tufted in a dense loop-pile construction, and tip sheared for extra texture. Try with other neutrals, or mix in color for your very own style statement.

100% jute, hand-tufted dense loop pile.
Color: Pewter

- 2'6 x 8' \$390
- 2' x 3' \$115
- 3' x 5' \$290
- 5' x 8' \$775
- 8' x 10' \$1,545
- 9' x 13' \$2,295



Spring Rugs



Vintage Quilt

A tucked-away trunk of heirloom quilts became the inspiration for this artisanal jute rug drenched in saturated color and boldly graphic pattern. This 100% jute rug is hand tufted in a dense loop-pile construction, and tip sheared for extra texture. Lends the kind of mod world-traveler meets vintage vibe we love. And you will too.

100% jute, hand-tufted dense loop pile.
Color: Multi

- 2'6" x 8' \$390
- 2' x 3' \$115
- 3' x 5' \$290
- 5' x 8' \$775
- 8' x 10' \$1,545
- 9' x 13' \$2,295



Spring Rugs



Cabbage Roses

The ornamental English cabbage rose steals the show on this botanical beauty that dazzles and delights with dramatic bouquets bursting with color on an indigo ground. This 100% jute rug is hand tufted in a dense loop-pile construction, and tip sheared for extra texture. A garden beauty with fresh, modern appeal.

100% jute, hand-tufted dense loop pile.
Color: Navy

• 2'6" x 8'	\$390
• 2' x 3'	\$115
• 3' x 5'	\$290
• 5' x 8'	\$775
• 8' x 10'	\$1,545
• 9' x 13'	\$2,295





Spring Rugs



Petaluma

Add a stroke of bright, floral genius to your abode with our pretty Petaluma Rug featuring charming painterly blooms against a fresh aqua ground. This 100% jute rug is hand tufted in a dense loop-pile construction, and tip sheared for extra texture. A great way to savor summer, and add joy to any room in the house.

100% jute, hand-tufted dense loop pile.
Color: Multi

• 2'6" x 8'	\$390
• 2' x 3'	\$115
• 3' x 5'	\$290
• 5' x 8'	\$775
• 8' x 10'	\$1,545
• 9' x 13'	\$2,295



Spring Rugs



Quinn

Our take on damask bursts forth with a mix of colors and an intricate scrolling pattern. Hand hooked with a mottled wool background, and finished with contrasting borders (damask at top and bottom, narrower motif at sides).

100% wool, hand-hooked.
Color: Coral or Blue (shown)

- 2'6" x 8' \$340
- 2' x 3' \$89
- 3' x 5' \$245
- 4' x 6' \$375
- 5' x 8' \$680
- 8' x 10' \$1,395
- 9' x 13' \$1,995

Spring Rugs



Succulents

Perhaps we should have called this our twenty-two hues rug! Nearly two dozen shades of greens, teals, fuchsia, and more form a vividly verdant rug, hand hooked of pure wool. Set against a backdrop of earthy brown, the succulent pattern lends the perfect dose of dazzle to wake up any space.

100% wool, hand-hooked.
Color: Multi

- 2'6" x 8' \$340
- 2' x 3' \$89
- 3' x 5' \$245
- 4' x 6' \$375
- 5' x 8' \$680
- 8' x 10' \$1,395
- 9' x 13' \$1,995

Spring Rugs



Go Fish

Our designers explored the wonders of the sea with this whimsical rug featuring a school of graphic-patterned fish swimming playfully across an aqua background. Coral accents float below the surface too—in a lovely contrasting shade of driftwood. Hand hooked of resilient polypropylene yarns.

100% polypropylene, hand-hooked.
Color: Lake

- 2'6" x 8' \$175
- 2' x 3' \$56
- 3'6" x 5'6" \$175
- 5' x 8' \$355
- 8' x 10' \$695

Spring Rugs



Coquille

Shell game...Beautiful beachcombers' treasures find their place indoors and out as a beautiful weather-resistant rug. The boldly graphic coquilles pattern is rendered in nautically perfect navy and white. Hand hooked of resilient polypropylene yarns.

100% polypropylene, hand-hooked.
Color: Navy

- 2'6" x 8' \$175
- 2' x 3' \$56
- 3'6" x 5'6" \$175
- 5' x 8' \$355
- 8' x 10' \$695



Spring Rugs



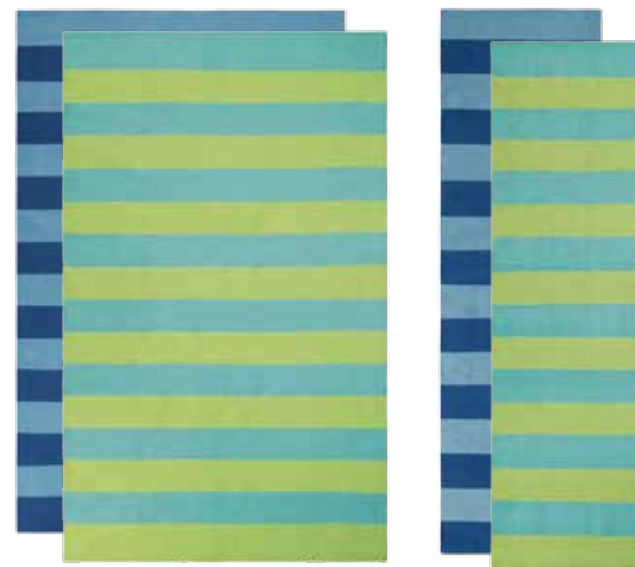
Mai Tai

Ablaze in hues of fuchsia, coral, and yellow, our floral-print rug is like an invitation to a tropical paradise, Mai Tai's included. Bold teals and greens lend contrast to this festive beauty that will infuse your deck, patio, or anywhere with a casual laid-back vibe. Hand hooked of resilient polypropylene yarns

100% polypropylene, hand-hooked.
Color: Multi

- 2'6" x 8' \$175
- 2' x 3' \$56
- 3'6" x 5'6" \$175
- 5' x 8' \$355
- 8' x 10' \$695

Spring Rugs



Awning Stripe

We never tire of stripes, especially large awning ones that take charge of a space with their bold, timeless appeal. Hand woven of 100% polyester from recycled plastic bottles.

100% polyester made from recycled plastic bottles.
Color: Lake or Navy (shown)

- 2'6" x 8' \$130
- 2' x 3' \$38
- 3' x 5' \$98
- 5' x 8' \$280
- 8' x 10' \$550



Spring Rugs



Martini Stripe

Go on, drink up our dazzling display of color and stripes. Coral-hued bands pop against garnishes of olive and chocolate for a refreshing twist on classic style. Hand woven of 100% polyester from recycled plastic bottles.

100% polyester made from recycled plastic bottles.
Color: Coral

- 2'6" x 8' \$130
- 2' x 3' \$38
- 3' x 5' \$98
- 5' x 8' \$280
- 8' x 10' \$550

Spring Rugs



Canopy Stripe

Classic canopy stripes get us every time, so we amped 'em up with color, color, and more color from blue to red, pink to purple and a few shades between. The result? A wake-up call for any porch, patio, or playroom. Hand woven of 100% polyester from recycled plastic bottles.

100% polyester made from recycled plastic bottles.
Color: Multi

- 2'6" x 8' \$130
- 2' x 3' \$38
- 3' x 5' \$98
- 5' x 8' \$280
- 8' x 10' \$550

Spring Rugs



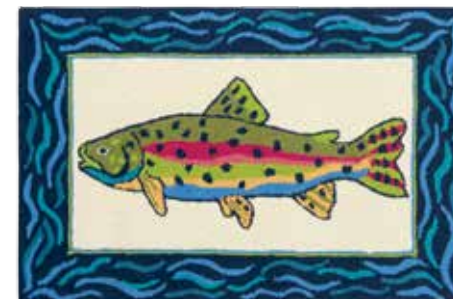
Cirrus Stripe

A clever combination of stripes (some thick, some thin) creates an eye-pleasing border and channels the lovely wispieness of Cirrus clouds on a warm, summer day. Rendered in a striking palette of cool blues with hints of cream and driftwood, this tightly-woven beauty is as welcoming indoors as it is out. Hand woven of 100% polyester from recycled plastic bottles.

100% polyester made from recycled plastic bottles.
Color: Blue

- 2'6" x 8' \$130
- 2' x 3' \$38
- 3' x 5' \$98
- 5' x 8' \$280
- 8' x 10' \$550

Spring Rugs



Rainbow Trout

What a catch! A colorful rainbow trout swims across our indoor/outdoor rug bringing a touch of rustic sporting whimsy to any entryway. Hand hooked of resilient polypropylene yarns.

100% polypropylene, hand-hooked.
Color: Multi

• 2' x 3' \$56



Spring Pillows



Macramé Pillow

Nautical is always right, especially when combined with the artistry of the centuries-old craft of macramé. We infused cotton duck cloth, dyed in sea-worthy shades, with a pretty textural layer for a cool beachy vibe that will enliven any space. Reverses to same (solid-colored duck cloth).

100% cotton
Colors: Aqua, Blue, Lime & Newport Red

14" x 20" \$98



Spring Pillows



Lupine Pillow

Inspired by Maine's marvelous meadows of Lupine flowers, and re-interpreted in an artisan's sampler of hand printing, embroidery and stitched ribbons on 100% cotton. Mix and match with solid-colored accent pillows for an eye-catching combination in your living space. Reverses to solid cotton. Includes feather/down insert.

100% cotton
Color: Multi

18" x 18" \$135

Spring Pillows



Eden Pillow

Pieced velvet appliqué, delicate embroidery and intricate beading fashion a garden of earthly delights in a gorgeous palette of navy and white. Pillow reverses to solid-blue velvet. Finished with contrast piping. Pair with our matching Eden Rug. Feather/down insert included.

100% cotton
Color: Blue

18" x 18" \$135