

Sikadur® AnchorFix-1

Modified-acrylic anchoring adhesive

Description	Sikadur AnchorFix-1 is a two-component, solvent- and styrene-free, modified-acrylic anchoring adhesive.
Where to Use	As a fast-curing anchoring adhesive for all grades of rebars, threaded rods, bolts and special fastening systems. Install in concrete and masonry base materials.
Advantages	<ul style="list-style-type: none"> ■ Low sensitivity to mixing errors. ■ Fast-curing. ■ Styrene-free, solvent-free ■ Low odor. ■ Low waste. ■ Can be dispensed/mixed with a standard, good quality caulking gun or sausage gun.
Packaging	10 fl.oz. (300 ml) or 20 fl.oz. (550 ml) two-component collapsible "cartridge in cartridge" system. Ready-to-use with a standard, good quality caulking gun (10 fl.oz.) or sausage gun (20 fl.oz.).

Gel and Curing Times

Application Temperature	Gel Time	Cure Time
86°F (30°C)	3 minutes	25 minutes
68°F (20°C)	7 minutes	50 minutes
50°F (10°C)	22 minutes	150 minutes
41°F (5°C)	50 minutes	200 minutes
14°F (-10°C)	80 minutes	24 hours

Limitations

- THE NTSB HAS STATED THAT THIS PRODUCT IS APPROVED FOR SHORT TERM LOADS ONLY AND SHOULD NOT BE USED IN SUSTAINED TENSILE LOAD ADHESIVE ANCHORING APPLICATIONS WHERE ADHESIVE FAILURE COULD RESULT IN A PUBLIC SAFETY RISK. CONSULT A DESIGN PROFESSIONAL PRIOR TO USE.

Technical Data

Shelf Life	Use within 18 months of manufacturing date.
Storage Conditions	Store dry in original unopened packaging in cool conditions at 40°-80°F (4-27°C) and out of direct sunlight.
Color	Components 'A'+ 'B' mixed: uniform gray
Mixing Ratio	Components 'A':Component 'B' = 10:1 by volume
Consistency	Comp. 'A'+ 'B' mixed: non-sag, creamy paste
Application Temperatures	Substrate and ambient: 14°-86°F (-10°-30°C)
Density (Mixed)	2.75 lbs./gal. (0.33 kg/l)

WARNING

Component A: IRRITANT. Contains epoxy resin, 1-ethenyl-4-methyl benzene, and silica quartz (sand). Eye irritant. May cause skin/respiratory irritation. Harmful if swallowed.

Component B: IRRITANT, SENSITIZER. Contains benzoyl peroxide, and glycerine. Eye irritant. May cause skin/respiratory irritation. Prolonged and/or repeated skin contact may cause an allergic reaction/sensitization. Harmful if swallowed.

Cured material, if sanded, may result in exposure to a chemical known to the State of California to cause cancer.

**Components A & B
First Aid**

Eyes: Flush eyes with water for at least 15 minutes **Skin:** Immediately flush skin with soap and water for at least 15 minutes. **Ingestion:** Do not induce vomiting. Contact a physician. **Inhalation:** Remove to fresh air. Contact a physician if symptoms persist. **Contact a physician immediately with all cases if symptoms persist.**

**Components A & B
Handling and Storage**

Avoid contact with skin and eyes. Use chemical resistant gloves/goggles/clothing. Use with adequate general and local exhaust ventilation. In the absence of adequate ventilation, use a properly fitted NIOSH approved ventilator. Wash hands thoroughly after handling product. Remove contaminated clothing and laundry before reuse. Store in a cool, dry, well-ventilated area.

**Components A & B
Clean Up**

In case of spill, wear chemical resistant gloves/goggles/clothing. Ventilate area. In absence of adequate ventilation, use a properly fitted NIOSH respirator. Contain spill and collect with absorbent material and transfer to a sealed container. Dispose of in accordance with applicable local, state and federal regulations.

Anchor Diameter (in.)	Drill Bit Diameter (in.)	Embedment Depth (in.)	Allowable Tensile Bond Strength Min. 2,000 psi (13.8 MPa) Concrete (lbs.)	Allowable Tensile Bond Strength Min. 4,000 psi (27.5 MPa) Concrete (lbs.)	Allowable Shear Load $\geq 2,000$ psi (13.8 MPa) Concrete (lbs.)
3/8	7/16	2-1/4	620	870	335
		3-1/2	1,285	1,840	1,125
		4-1/2	1,400	1,995	1,125
1/2	9/16	3	925	1,300	600
		4-1/4	1,635	2,340	2,000
		6	1,855	2,600	2,000
5/8	3/4	3-3/4	1,545	1,985	940
		5	2,310	3,300	3,130
		7-1/2	3,085	3,970	3,130
3/4	7/8	4-1/2	2,450	3,435	1,350
		6-3/4	3,395	4,850	4,505
		9	4,610	6,425	4,505
1	1-1/8	6	3,640	5,100	2,400
		8-1/4	4,210	6,020	8,010
		12	5,825	8,740	8,010

Load Capacities - Threaded Rod

- 1) Allowable loads are based on a minimum safety factor of 5.33. Higher factors of safety may be warranted depending on actual application and job site conditions. Consult a design professional prior to use.
- 2) Minimum concrete base material thickness must be 1.5 times the anchor embedment depth.
- 3) Allowable load of adhesive anchor must be the lesser of bond or steel strength.

****For information on the effects of Anchor Spacing and Edge Distance on adhesive anchor performance, please contact Sika's Technical Service Department.**

Rebar Size (Diameter)	Drill Bit Diameter (in.)	Embedment Depth (in.)	Allowable Tensile Bond Strength Min. 2,000 psi (13.8 MPa) Concrete (lbs.)	Allowable Tensile Bond Strength Min. 4,000 psi (27.5 MPa) Concrete (lbs.)	Allowable Shear Load $\geq 2,000$ psi. (13.8 MPa) Concrete (lbs.)
No. 3 (3/8")	1/2	3-3/8	750	1,070	1,190
No. 4 (1/2")	5/8	4-1/2	1,345	1,925	1,970
No. 5 (5/8")	3/4	5-5/8	1,945	2,780	2,940
No. 6 (3/4")	7/8	6-3/4	2,550	3,640	4,110
No. 7 (7/8")	1	7-7/8	3,145	4,495	5,450
No. 8 (1")	1-1/8	9	3,745	5,355	7,030

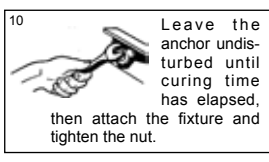
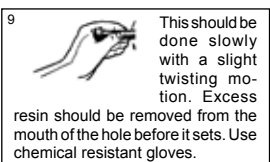
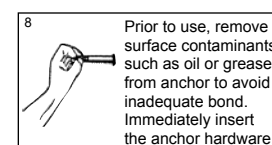
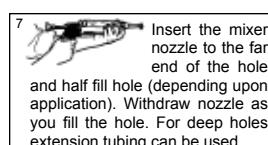
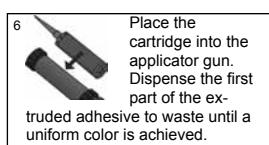
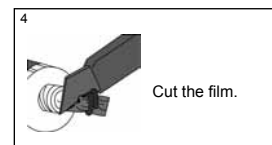
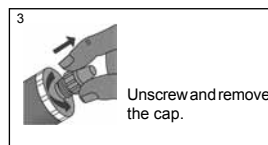
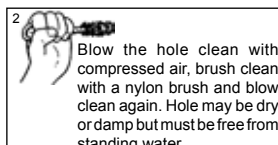
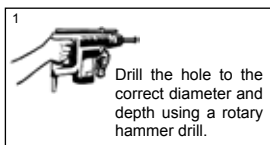
Load Capacities - Reinforcing Bar

- 1) Allowable loads are based on a minimum safety factor of 5.33. Higher factors of safety may be warranted depending on actual application and job site conditions. Consult a design professional prior to use.
- 2) Minimum concrete base material thickness must be 1.5 times the anchor embedment depth.
- 3) Allowable load of adhesive anchor must be the lesser of bond or steel strength.

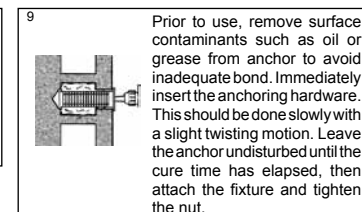
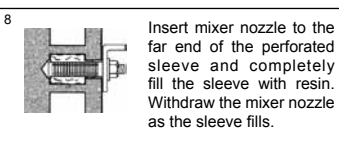
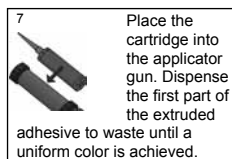
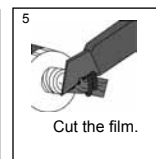
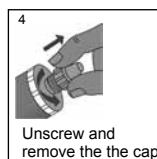
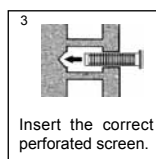
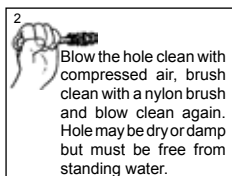
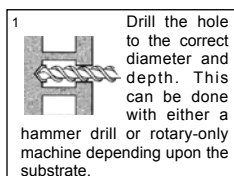
****For information on the effects of Anchor Spacing and Edge Distance on adhesive anchor performance, please contact Sika's Technical Service Department.**

Methods of Use

Solid Base Material



Hollow Base Material



KEEP CONTAINER TIGHTLY CLOSED • KEEP OUT OF REACH OF CHILDREN • NOT FOR INTERNAL CONSUMPTION • FOR INDUSTRIAL USE ONLY

All information provided by Sika Corporation ("Sika") concerning Sika products, including but not limited to, any recommendations and advice relating to the application and use of Sika products, is given in good faith based on Sika's current experience and knowledge of its products when properly stored, handled and applied under normal conditions in accordance with Sika's instructions. In practice, the differences in materials, substrates, storage and handling conditions, actual site conditions and other factors outside of Sika's control are such that Sika assumes no liability for the provision of such information, advice, recommendations or instructions related to its products, nor shall any legal relationship be created by or arise from the provision of such information, advice, recommendations or instructions related to its products. The user of the Sika product(s) must test the product(s) for suitability for the intended application and purpose before proceeding with the full application of the product(s). Sika reserves the right to change the properties of its products without notice. All sales of Sika product(s) are subject to its current terms and conditions of sale which are available at www.sikausa.com or by calling 800-933-7452.

Prior to each use of any Sika product, the user must always read and follow the warnings and instructions on the product's most current Technical Data Sheet, product label and Material Safety Data Sheet which are available online at www.sikausa.com or by calling Sika's Technical Service Department at 800-933-7452. Nothing contained in any Sika materials relieves the user of the obligation to read and follow the warnings and instruction for each Sika product as set forth in the current Technical Data Sheet, product label and Material Safety Data Sheet prior to product use.

LIMITED WARRANTY: Sika warrants this product for one year from date of installation to be free from manufacturing defects and to meet the technical properties on the current Technical Data Sheet if used as directed within shelf life. User determines suitability of product for intended use and assumes all risks. Buyer's sole remedy shall be limited to the purchase price or replacement of product exclusive of labor or cost of labor. **NO OTHER WARRANTIES EXPRESS OR IMPLIED SHALL APPLY INCLUDING ANY WARRANTY OF MERCHANTABILITY OR FITNESS FOR A PARTICULAR PURPOSE. SIKASHALL NOT BE LIABLE UNDER ANY LEGAL THEORY FOR SPECIAL OR CONSEQUENTIAL DAMAGES. SIKASHALL NOT BE RESPONSIBLE FOR THE USE OF THIS PRODUCT IN A MANNER TO INFRINGE ON ANY PATENT OR ANY OTHER INTELLECTUAL PROPERTY RIGHTS HELD BY OTHERS.**

Visit our website at www.sikausa.com

1-800-933-SIKA NATIONWIDE

Regional Information and Sales Centers. For the location of your nearest Sika sales office, contact your regional center.

Sika Corporation
201 Polito Avenue
Lyndhurst, NJ 07071
Phone: 800-933-7452
Fax: 201-933-6225

Sika Canada Inc.
601 Delmar Avenue
Pointe Claire
Quebec H9R 4A9
Phone: 514-697-2610
Fax: 514-694-2792

Sika Mexicana S.A. de C.V.
Carretera Libre Celaya Km. 8.5
Fracc. Industrial Balvanera
Corregidora, Queretaro
C.P. 76920
Phone: 52 442 2385800
Fax: 52 442 2250537



Sika and Sikadur are registered trademarks.
Printed in Canada.